
UNiBOX HD3 Instruction Manual

High Definition
Personal Video Recorder
Digital Satellite Receiver

The UNIBOX HD3 digital receiver is fully compliant with the international Digital Video Broad-casting (DVB) standard, and thus is able to receive digital broadcasts of that standard.



DVB
Digital Video
Broadcasting

Safety Precautions

This product has been manufactured to act in accordance with the international safety standards. Please read through the safety instructions carefully before using this product as the manufacturer takes no responsibility for any damages due to the consumer's misuse of the product.

1. Power Supply

- Use this product with the type of power supply that is indicated on the marking label. Its operating range is AC 90V~250V and 50/60Hz.
- Use an outlet that has surge suppression or ground fault protection.
- Do not overload a wall outlet, extension cord or adapter as this may result in electric fire or shock.
- Do not alter, bend, or twist the power cord or plug.
- Be sure to route the power supply cords so that they won't be walked on or pinched by items around it.
- Keep the power cord away from any heating appliances to avoid melting the cover vinyl.
- If the cord is damaged, do not plug in the product and be sure to get the cord replaced.
- When unplugging, grip the power plug, not the cord.
- If any of the following occur, unplug the product from the outlet and contact authorized service personnel:
 - The power cord or supply is damaged
 - Liquids of any kind have been exposed to the product
 - The product has been dropped or the casing has been damaged
 - The product is not performing as it should
- If the product won't be used for a long period of time, unplug it

2. Exposure and Placement

- Only operate the product in moderate temperatures.
- Place the product indoors to avoid exposing it to lightening, rain or direct sunlight.
- Do not expose any liquids or sources of open flame (such as candle flame) to the product.
- Do not place the product near any heat emitting appliances. This may cause impairment in cooling.
- Do not place the product on any unstable surface because it may fall and cause serious personal injuries and/or damage the product.
- Always make sure the product has enough space around it for ample ventilation and heat transfer.
- Do not place the product in a closed space (such as a cabinet) without suitable ventilation.
- Be sure to place the product approximately 10 cm away from any appliances that are exposed to electromagnetic influences, such as a TV or a VCR.
- Do not use any attachments or accessories that are not recommended by the manufacturer. This may cause hazards to the product, and will **void the warranty**.

3. Installation and Maintenance

- Before connecting or disconnecting the satellite cable to the product, be sure that the product is unplugged. Failure to do so may cause damage to the LNB.
- The LNB cable must be earthed to the system earth for the satellite dish.
- Before connecting or disconnecting the cable from the TV, be sure that the product is unplugged. Failure to do so may cause damage to the TV.
- Before cleaning the product, be sure that the product is unplugged.
- Use a damp cloth (do not use any solvents) to clean the exterior of the product.

4. Warnings

- Do not use this product near any flammable or explosive gases as this increases the risk of explosions.
- Do not use the product if any liquids or foreign objects come in contact with it.
 - Turn the product off, disconnect the power cord, and contact your dealer.
 - Do not use the product since this could cause a fire or electric shock.
- Do not operate this product or hold the power cord with wet hands as the risk of getting electronic shock is very high.
- Unplug the product and disconnect the LNB cable during a thunderstorm or when left unattended and unused for long periods of time. This will prevent damage to the product due to lightening and power-surges.
- Do not use this product when it is out of order. Continued use when defective can cause serious damage to it and you.
- Do not put any alien items into or block the slots or ventilation openings of the product. This can cause damage to the product and reduce the life span.

5. Warranty

Be aware that any adjustments or handling (such as, but not limited to opening the casing) other than what is specified here will **void your warranty**. Attempting to modify the product may result in fire, injury, electric shock, or other severe damage to you or the product.

- Do not remove the cover, as there is risk of electric shock.
 - If it is absolutely necessary, please contact a trained professional.
- Do not try to modify the product as this may cause fires, injuries, electronic shocks or other severe damage to you or the product.

Contents

1	Introduction	4
1.1	Main Features	4
1.2	Product Descriptions	5
1.3	Remote Controller	7
1.4	Conditional Access	9
1.5	Technical Specifications	10
2	Installation of UNIBOX HD3	12
2.1	Connecting Satellite Cable	12
2.2	Connecting the TV	13
2.3	Connecting Power	16
2.4	Power On/Off	17
3	First Time Installation	18
4	Basic Operations	26
4.1	Channel List	26
4.2	Switching Channel	29
4.3	Program Information	30
4.4	Volume Control	31

4.5	Selecting Audio Track	31
4.6	Subtitle	32
4.7	Media Player	33
4.8	Sleep Timer	34
4.9	Teletext	35
4.10	Electronic Program Guide	37
4.11	Timeshift	39
4.12	Recording	40
4.13	Recording Play	44
4.14	Managing Recording Files	45
4.15	Interactive Media	46
5	System Configuration	50
5.1	Main Menu	50
5.2	System Setup	52
5.2.1	System Configuration	52
	A/V Settings	53
	Video Enhancement Settings	54
	Customization	55
	Record	56
	Subtitle Settings	57
	Language Selection	57
	Selecting Time Zone	58
	Hard Disk Setup	58
	Initialize Hard Disk	59

3 Contents

Network Setup	59
Skin	62
5.2.2 Service Searching	63
Tuner Configuration: DVB-S2	63
Tuner Configuration: DVB-C	64
Tuner Configuration: DVB-T	64
Automatic Scan of Services	65
Manual Scan of Services	66
5.2.3 Checking CAM	68
5.2.4 Parental Control	69
5.2.5 Factory Reset	72
5.2.6 Cross EPG	73
5.2.7 OSD 3D Setup	74
5.2.8 Checking H/W & S/W Information	75
Service Information	75
System Information	76
6 Menu Structure	78
7 Troubleshooting	82
8 Copyright – GNU GPL	84

Chapter1.

Introduction

The UNIBOX HD3 digital receiver is fully compliant with the international Digital Video Broadcasting (DVB) standard, and thus is able to receive digital broadcasts of that standard.

For its operation you need an antenna, which must be installed appropriately.

1.1 Main Features

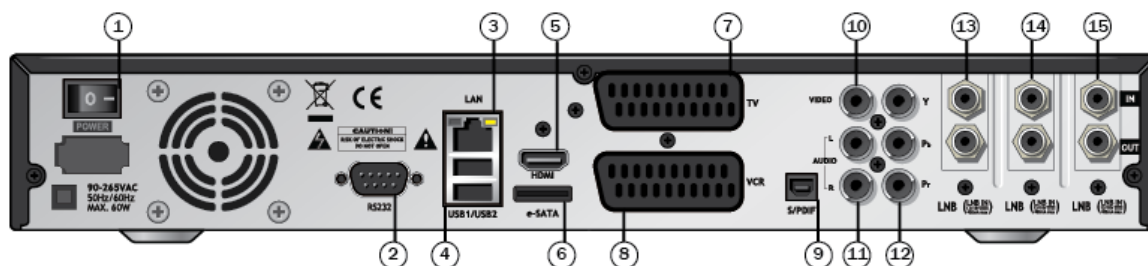
- 400 MHz MIPS Processor
- Linux Operating System
- Media Player
- Downloadable Plug-ins supported
- 2 x Smartcard Readers
- 2 x Common Interface
- MPEG2 / H.264 Hardware Decoding
- 3 x DVB-S2 Tuners
- 11 character dot matrix VFD
- 512MB NAND Flash
- 512MB DDR SDRAM
- 10/100MB Ethernet Interface
- 3 x USB 2.0
- RS-232
- HDMI
- 2 x SCART
- S/PDIF for digital bit stream out (optical)
- EPG supported
- Automatic & Manual Service Scan supported
- Multiple LNB control (DiSEqC) supported
- Skin change supported

1.2 Product Descriptions

Front Panel



- ① **Smartcard reader slot**
- ② **CI Module slot**
- ③ **USB:** Connect a USB storage device
- ④ **Display :** Displays the current menu information.
- ⑤ **OK :** Confirms the selected menu option.
- ⑥ **CH▼ :** Switches channel
- ⑦ **CH▲ :** Switches channel
- ⑧ **VOL▼ :** Volume control
- ⑨ **VOL▲ :** Volume control
- ⑩ **Power :** Power On

Rear Panel

- ① **On/Off Switch** : Powers on/off.
- ② **RS-232** : RS-232 data port is provided.
- ③ **Ethernet** : Connects the PC or another set top box of ET.
- ④ **USB** : Connects the USB memory stick or external HDD.
- ⑤ **HDMI** : Connects to TV using a HDMI cable for both audio and video signals.
- ⑥ **e-SATA** : Connects the external HDD using e-SATA cable.
- ⑦ **TV SCART** : A SCART connector is provided for TV using a SCART cable.
- ⑧ **VCR SCART** : A SCART connector is provided for VCR using a SCART cable.
- ⑨ **S/PDIF** : Connects to a digital audio system using S/PDIF cable.
- ⑩ **Video output** : Connects to TV using RCA cable.
- ⑪ **Audio output** : Connects to TV using RCA cable.
- ⑫ **Component (YPbPr)** : Connects to TV using a component cable.
- ⑬ **TUNER** : A satellite cable can be connected.
- ⑭ **TUNER** : A satellite cable can be connected.
- ⑮ **TUNER** : A satellite cable can be connected.

1.3 Remote Controller



- **Power:** To switch the receiver in and out of stand-by mode.
- **Numeric Keys:** Enters a service number for service change or to specify values for menu options.
- **Prev:** Previous channel.
- **Next:** Next channel.
- **Menu:** Displays the main menu.
- **Info:** Displays the service information box. It is also used to display more information about a program.
- **Navigation Keys:** Navigates Up/Down and Left/Right on the menu options. Up/down keys are used to call up the channel list.
- **OK:** Confirms the selected menu option.
- **Audio:** Displays the audio track option to choose (e.g. AC3, Stereo)
- **PVR :** Used to start Timeshift function.
- **Exit:** Exits the current menu option into the live mode, or switches one step back of the menu.
- **Color Keys:** Each key is assigned a specific function that may be different in each menu.
 - Red - mainly used for REC, Cancel, etc.
 - Green - mainly used for OK
 - Yellow
 - Blue
- **Volume +/- :** Adjusts the audio volume.
- **FileList :** Displays the list of recordings stored on the internal HDD if any.
- **Mute :** Mutes the audio.
- **Channel ▲/▼ :** Navigates through the scanned channel list

- **<<** : Fast Rewind
Fast rewinds at up to 128 times faster than the normal speed (x2/4/8/16/32/64/128)
- **▶||** : Play and Pause
- **Stop** : Stops playing of a recording and goes to the live mode.
- **>>** : Fast Forward
Fast forwards at up to 128 times faster than the normal speed (x2/4/8/16/32/64/128)
- **www** : Displays the web browser
- **Subtitle** : Displays the subtitle of the current channel if the channel provides subtitle.
- **Timer** : Sets sleep timer
- **Rec** : Displays the recording menu.
- **TV** : Displays the TV channel list.
- **Radio**: Displays the Radio channel list.
- **TEXT** : Displays the teletext information of the current channel, if the channel provides teletext data.
- **Help** : Displays major important operation methods of UNIBOX. This provides users with a quick guide of using UNIBOX.

1.4 Conditional Access

Amongst the channels that are scanned via UNIBOX HD3, some channels can be properly tuned in only with the corresponding Smartcard. UNIBOX HD3 provides two Smartcard Reader slots and users need to purchase those Smartcards that are required for viewing such subscription based services.

Insertion of Smartcard

- ① Open the door on the right side.
- ② Insert Smartcard as in the following instruction.
- ③ Make sure that the Smartcard remain inserted while viewing.



Insertion of CAM (Conditional Access Module)

There are several Conditional Access Systems (CAS) that UNIBOX HD3 supports. To be able to watch channels that are encrypted in such CAS as Nagravision, NDS, Irdeto, Viaccess, etc, users need to purchase a CAM that is corresponding to each CAS, as well as Smartcard to decrypt those encrypted channels.

- ① Insert a Smartcard into the CAM as in the below picture.
- ② Once the Smartcard inserted into the CAM, insert the CAM into the CI slot.
- ③ Make sure that the CAM remains inserted while viewing.



1.5 Technical Specifications

Front Panel

- | | |
|--------------------------|---|
| ▪ Display: | 11-digit Dot Matrix VFD display displaying channel names, icons and program information |
| ▪ Smartcard Reader Slot: | 2 ea |
| ▪ Common Interface: | 2 ea |
| ▪ USB: | 1 x USB 2.0 |
| ▪ Buttons: | 6 (Power, OK, Volume Up/Down, Channel Up/Down) |

Rear Panel

- | | |
|---------------------------------|---------------------------|
| ▪ Power Switch: | 1 ea |
| ▪ Sat-IF input/output: | 3 x F-type socket |
| ▪ Connection TV/VCR: | 2 x Scart socket |
| ▪ Video/Audio output (digital): | 1 x HDMI |
| ▪ Audio output (digital): | Standard optical (S/PDIF) |
| ▪ USB: | 2 x USB2.0 |
| ▪ Ethernet: | 1 ea |
| ▪ RS-232: | 1 ea |

Power

- | | |
|----------------------|--------------------------------|
| ▪ Mains voltage: | 95~250 / 50~60 V/Hz |
| ▪ Power consumption: | 65/35/1 W |
| | (Max./typ. operation/stand-by) |

11 Introduction

RF

- RF range: 950~2,150 MHz
- Modulation, FEC, de-multiplexer: DVB-S/DVB-S2 standard

Video

- Video resolution: CCIR601 (720 x 576 lines), 576p, 720p, 1080i, 1080p@30
- Video decoding: MPEG-2, MPEG-4 compatible
- Input data rate: 2~45 MSymb/s
- S/N: > 53 dB

Audio

- Decoding: AC3, MPEG-4(AAC-HE), MPEG-1 Layer1, 2 and 3
- Sampling rate: 32 / 4.1 / 48 KHz
- S/N: > 65 dB

LNB

- LNB supply (horiz/vert): 14 / 18 ; Max. 400mA
- Control signal: 22 KHz ; ToneBurst ; DiSEqC™1.0 / 1.1 / 1.2

General

- Dimensions (W x H x D): 380 x 67 x 240 mm
- Weight (without HDD): App. 4 KG

Chapter2.

Installation of UNIBOX HD3

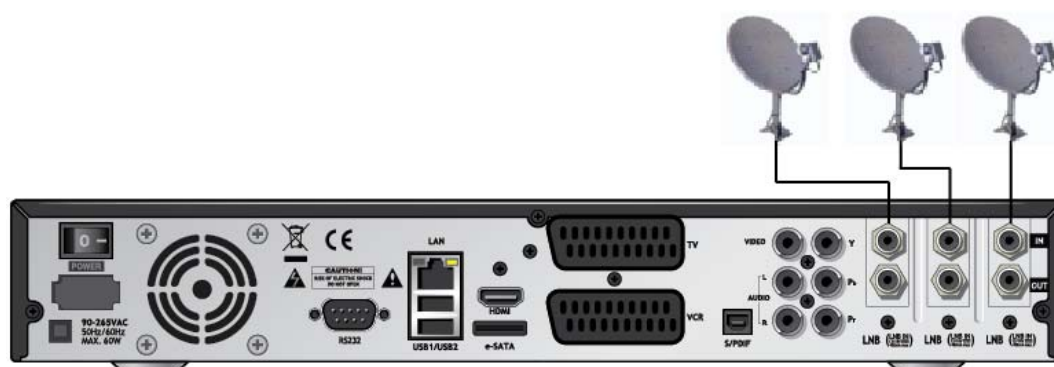
This chapter will guide you through the whole installation process of UNIBOX HD3. Please read each section carefully to make sure that the system runs properly.

2.1 Connecting Satellite Cables

UNIBOX HD3 is integrated with triple satellite tuners, and one of the first steps is to connect satellite cable(s) to UNIBOX HD3 in order to gain optimal signal quality. You can either choose one of the following connection methods depending on the equipment you have.

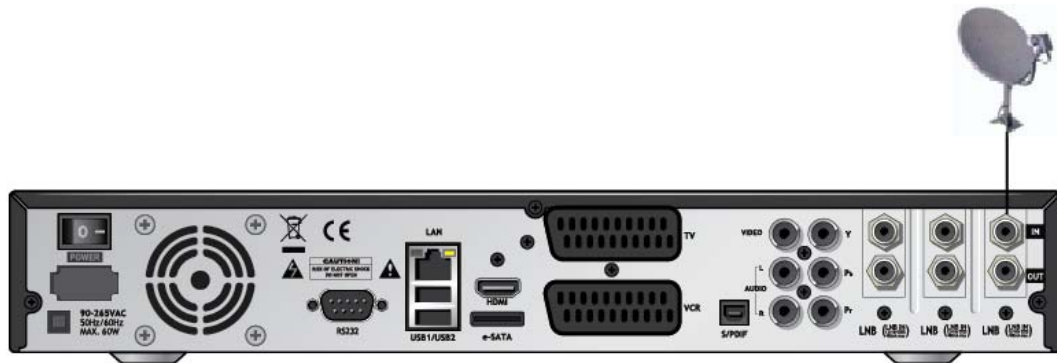
A. Three Separate Satellite Cables

In case you have three separate satellite cables providing different broadcast signals, you can configure TUNER1, TUNER2, and TUNER3 Input independently.



B. Internal Loop-through

In case you have only one satellite cable, connect the cable to TUNER 1 Input.



2.2 Connecting the TV (and VCR)

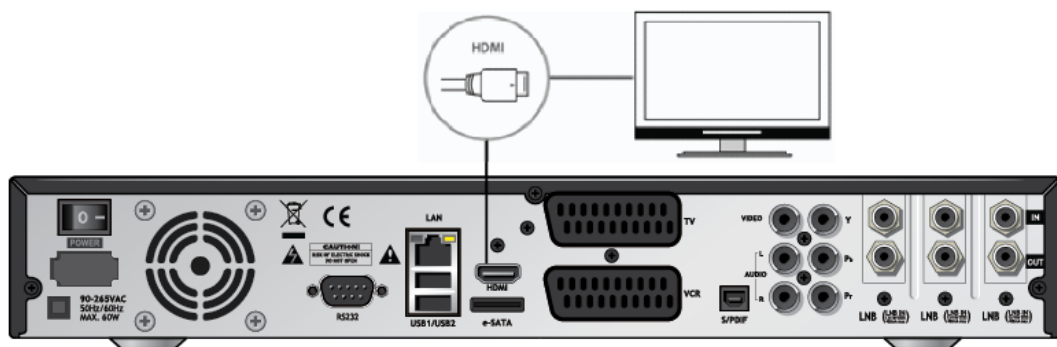
UNIBOX HD3 provides a variety of audio/video connection methods.

A. Connecting TV via HDMI Cable

For the sake of the best picture quality, especially for digital TV, HDMI connection is recommended. Most HDTVs have HDMI connectors to ensure the highest picture quality.

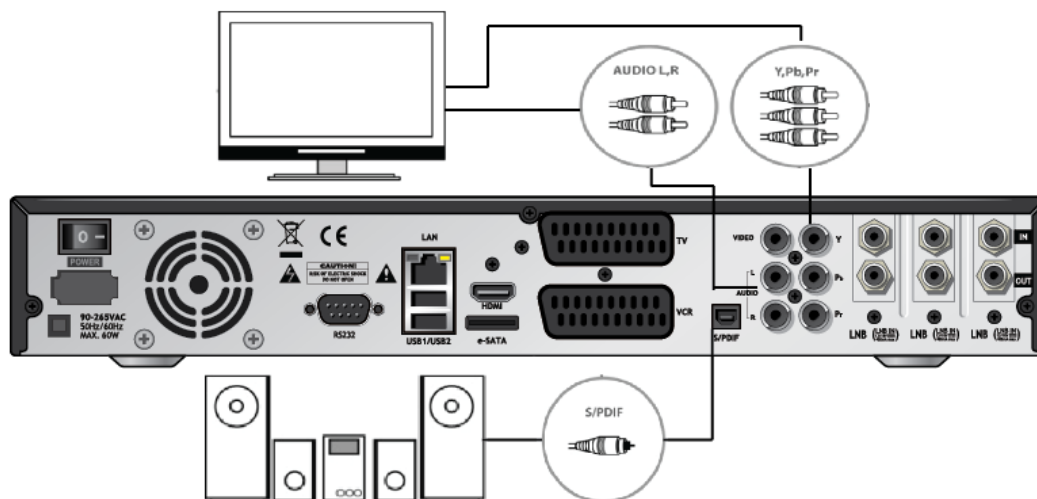
In the rear panel of UNIBOX HD3 one HDMI connector is available for this purpose.

Connect your TV to UNIBOX HD3 using a HDMI cable as follows.



B. Connecting TV via Component Cable

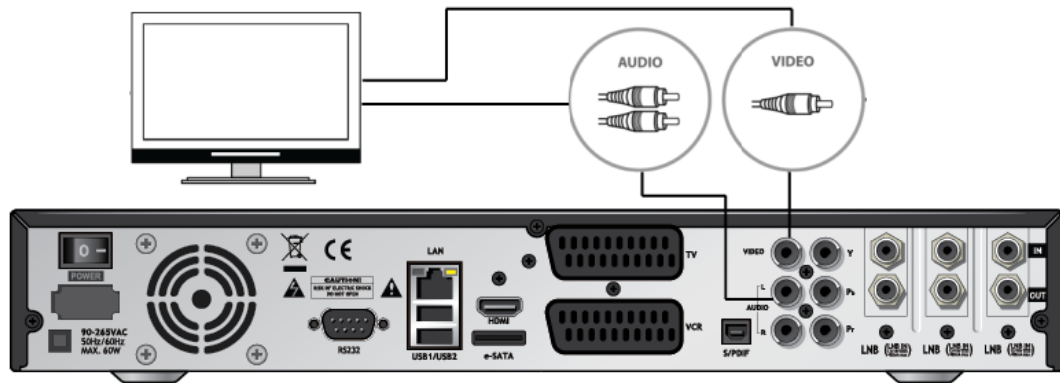
The secondly recommend TV connection for digital TV is via component cable (YPbPr). However, unlike the HDMI connection which delivers audio and video signal at the same time, YPbPr connection requires additional audio connection either via RCA cable (Stereo L/R) or S/PDIF as follows.



NOTE: When you have an A/V receiver with S/PDIF digital audio input, this connection is recommended to enjoy the best audio quality, especially for the Dolby Digital sound.

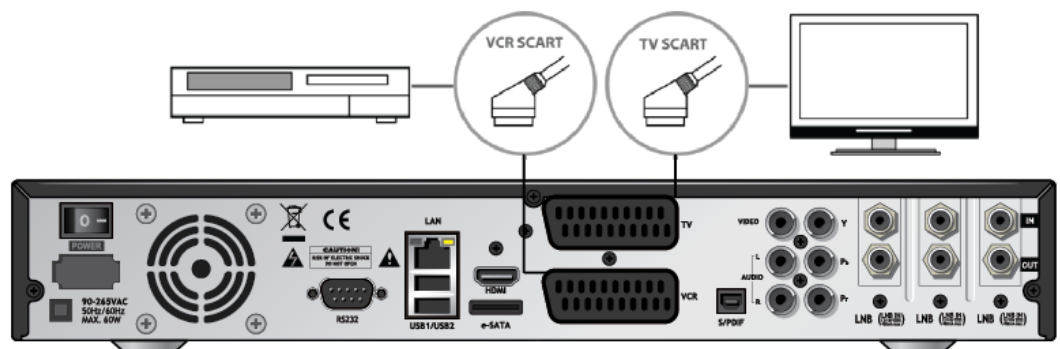
C. Connecting TV via RCA (Video) Cable

UNIBOX HD3 provides Composite video connection as well. Composite cable has normally three connectors at the both end; one Video (Yellow) and two Audio (White/Red). Connect your TV to UNIBOX HD3 as follows:



D. Connecting TV (and VCR) SCART Cable

In case your TV is analogue TV, SCART cable is the most common method. Connect your TV to UNIBOX HD3 using SCART cable as follows



2.3 Connecting Power


A power code is provided as one of the basic accessories of UNIBOX HD3.

- Connect the power cord to the connector at the rear panel of UNIBOX HD3.
- Connect the power cord to a power outlet.
- Turn on the power switch at the rear panel.

NOTE: AC input condition

- Nominal Voltage Range: 100~240 VAC
- Maximum Voltage Range: 90~264 VAC
- Nominal Frequency: 50/60 Hz
- Maximum Frequency Range: 47~63 Hz

2.4 Power ON/OFF

[Press  → 'Standby/Restart']

There are several ways to turn your UNIBOX HD3 ON or OFF

- **Complete Power Shutdown**

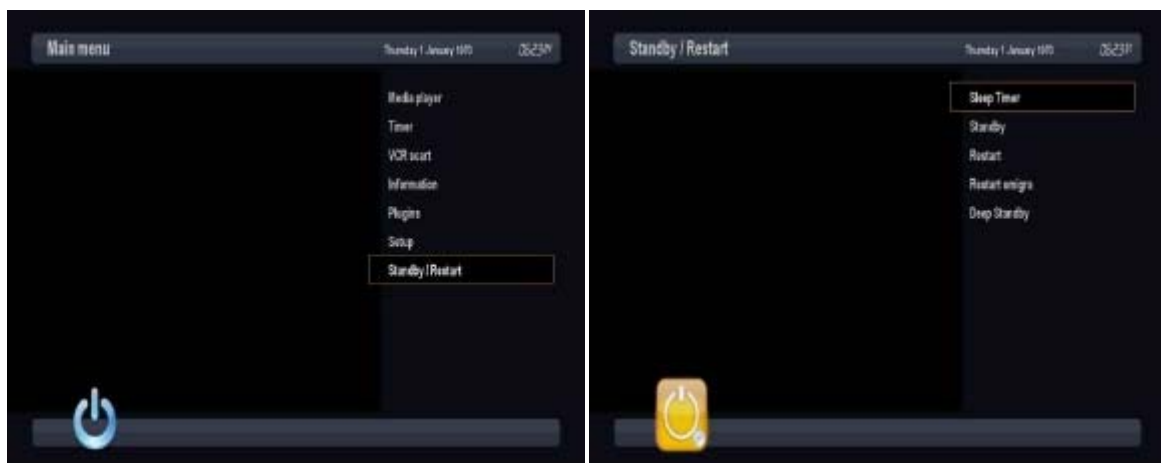
There is a Power Switch in the rear panel and once it is ON, you do not need to turn it on or off each time. It takes a longer time to boot the system if you turned it off by this switch.

- **Standby Mode**

POWER key is normally used to turn the power of UNIBOX HD3 on or off. If you press POWER, it instantly switches your UNIBOX HD3 off or on. In this mode, the system is not completely shut down and thus it takes a shorter time to turn it on and off.

- **Deep Standby Mode**

Deep Standby is used to reduce the standby power consumption. UNIBOX HD3 is designed to be energy efficient and to guarantee the power consumption to be under 1W in the deep standby mode.



Chapter3. First Time Installation

When you turn on UNIBOX HD3 for the first time after purchase, an installation wizard will begin step by step.

NOTE: 'OK' key is used for confirmation and turns to the next step. Press 'EXIT' key to return to the previous page.

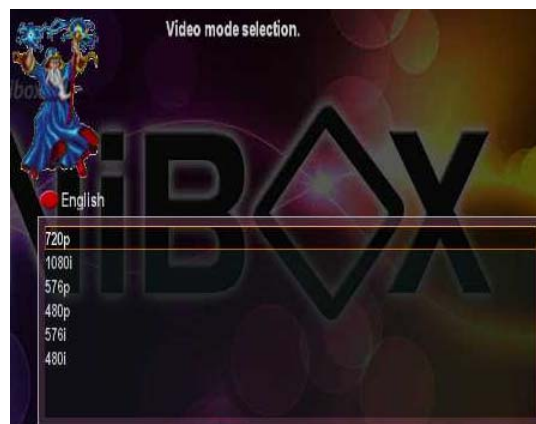
Step 1. Video Input Selection

UNIBOX HD3 will automatically probe the video input port. Press OK if you can see this page on your TV. Or you can select a different input port (HDMI, SCART, or YPbPr). Use UP/DOWN key to scroll up and down to find the input port you want.



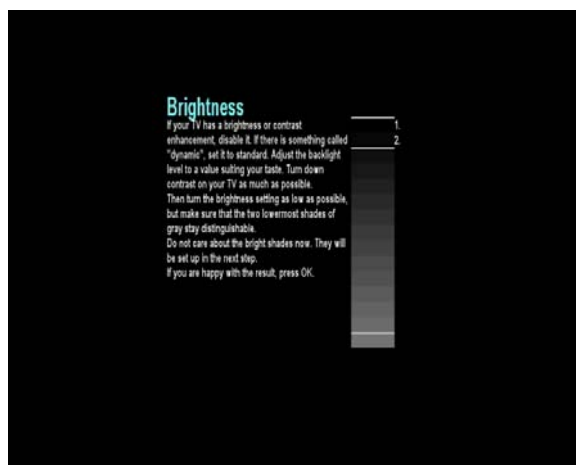
Step 2. Video Mode Selection

UNIBOX HD3 provides various video modes. You can choose one. Use UP/DOWN key to scroll up and down to find the mode you want.

**Step 3. Brightness**

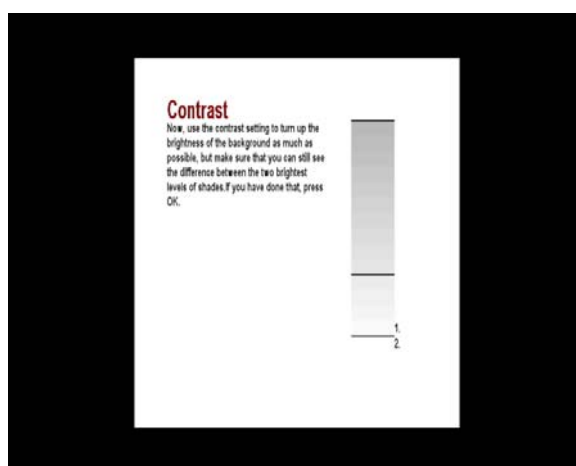
Adjust the backlight level to a value suiting your taste.

If you are happy with the result, press OK.

**Step 4. Contrast**

Use the contrast setting to turn up the brightness of the background as much as possible.

If you have done that, press OK.



Step 5. Language Selection

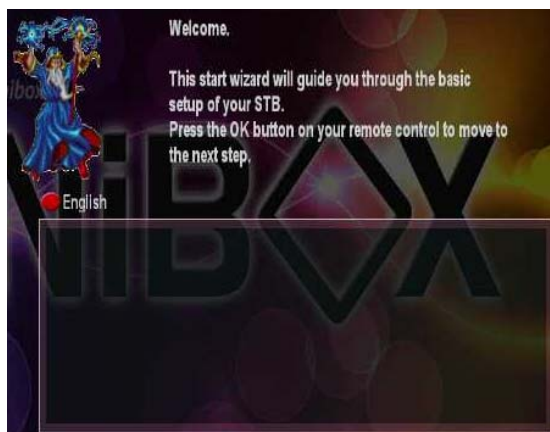
UNIBOX HD3 provides various languages and here you can choose the main language for your UNIBOX HD3. Use UP/DOWN key to scroll up and down to find the language you want.

**Step 6. Configuring Satellite Connection**

From now on you need to configure the satellite connection. You have two options:

- Use wizard to setup basic features
- Exit wizard

You are strongly recommended to use wizard as it is designed to guide you through the configuration process.



Step 7. Configuring Tuner A

Using LEFT/RIGHT key, you can choose one of the following Configuration Modes:

- Not configured.
- Simple
- Loop-through to: mode to make the TUNER 1 be internally connected to the TUNER 2.
- Equal to: mode to use the same configuration as that of Tuner B.
- Advanced: for an advanced user configuration.

If you choose Simple configuration mode, the following picture will appear.



The five modes are available for the satellite cable connection between LNB and your UNIBOX HD3 as below:

Single

This option is used to receive a single satellite with a single LNB. The cable from LNB is directly connected to UNIBOX HD3.

**ToneBurst A/B**

This option is used if you want to receive two satellites using a ToneBurst switch.

**DiSEqC A/B**

This option allows you to configure two satellites in Port A and Port B.

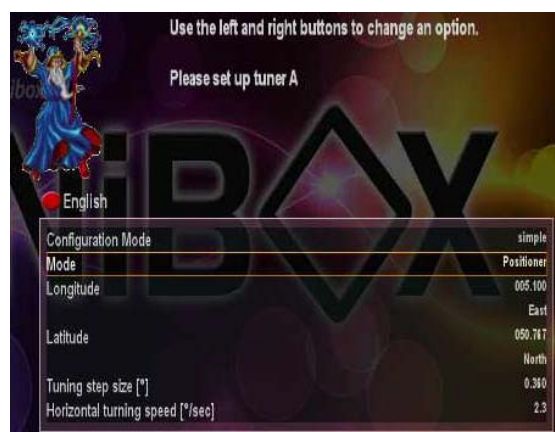


DiSEqC A/B/C/D

This option allows you to configure four satellites in Port A, Port B, Port C, and Port D.

**Positioner**

This option is used when you have a motorized satellite antenna.

**Step 8. Configuring Tuner B**

This step is for the configuration of TUNER B Input and the process is same as that of Tuner A. For further information please refer to the above "Step 7. Configuring Tuner A" section.

Step 9. Configuring Tuner C

This step is for the configuration of TUNER C Input and the process is same as that of Tuner A. For further information please refer to the above "Step 7. Configuring Tuner A" section.


Step 10. Parental Control Option

Here you can choose whether to enable the parental control option. If you press OK, you will be asked to enter PIN number.



Chapter4. Basic Operations

4.1Channel List

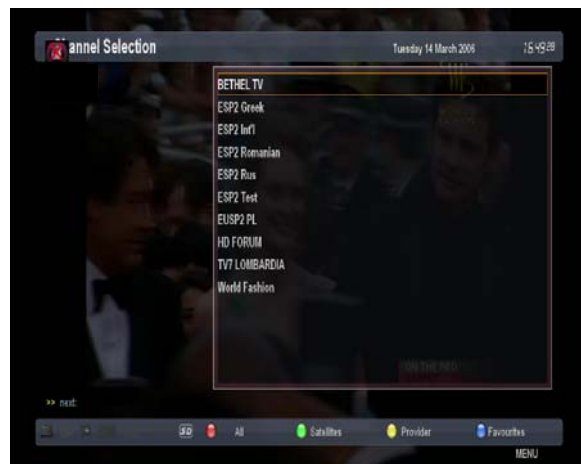
How to use > Press  / 

If press **Navigation UP/DOWN** key, this will activate Channel Selection Menu.

Four types of the channel lists are available to help you manage your channel selection.

RED

It displays the list of all scanned channels.



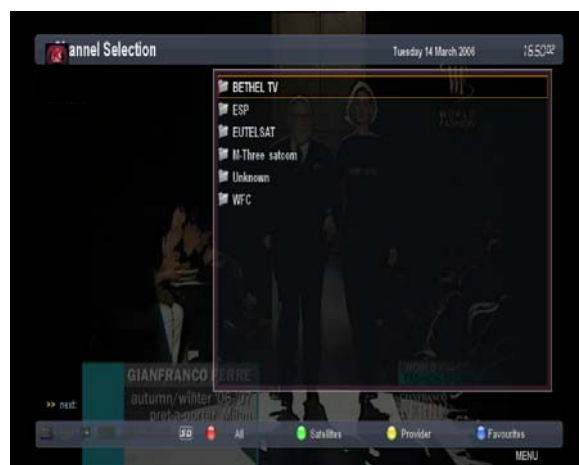
GREEN

It displays the list of all satellites scanned.
Per each satellite, channels are arranged according to Services, Provider, and New.



YELLOW

It displays the list of providers.



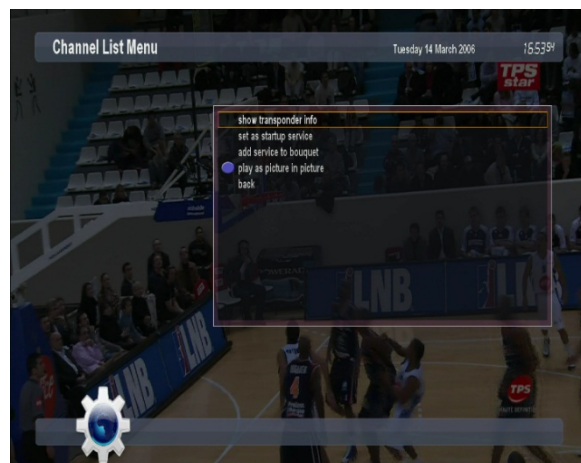
BLUE

It displays the list of your favorite channels.



In order for you to add certain channels to this favorites list.

- ① Call up the Channel Selection list by Pressing **UP** or **DOWN** key.
- ② Go to All lists by pressing **RED** key.
- ③ Select the channel that you want to add to the Favorites list.
- ④ Press **MENU** key on the selected channel and the following menu appears.
- ⑤ Choose add service to bouquet and press **OK**.
- ⑥ Go to the Favorites list by pressing **BLUE** key to confirm that the selected channel is correctly included in the list.



4.2 Switching Channel

How to use > Press CHANNEL **+** / **-** or press **▲** / **▼** → Press **◀** / **▶** to move to the next channels

UNIBOX HD3 offers various channel zapping methods. You can switch the current channel by pressing.

UP/DOWN key

If you press **UP** or **DOWN** key, Channel Selection menu appears.

You can move up and down to select the channel that you want to tune into.

LEFT/RIGHT key

If you press **LEFT** or **RIGHT** key, the previous or subsequent channel of the current channel is tuned in.



CHANNEL +/- key


If you press **CHANNEL +/-** key, the previous or subsequent channel of the current channel is tuned in.

Channel Number

Enter a channel number, and it will instantly tune into the channel.

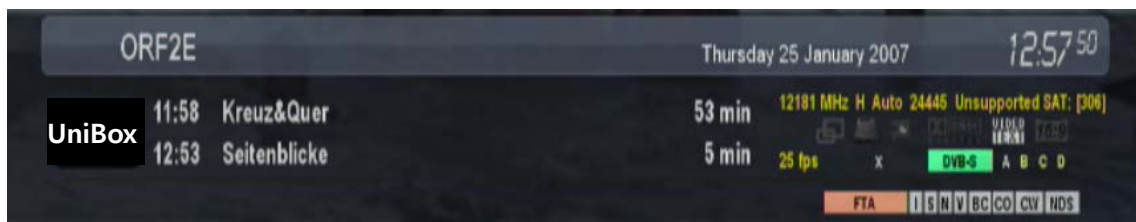
NOTE: If channel change is not done, it is probably because the selected channel is encrypted and you do not have a proper smartcard.

4.3 Program Information

How to use > Press 

Whenever you change the channel, infobar is always displayed for 5 seconds (default setting). Infobar is designed to provide you comprehensive information of the channel that you are currently watching.

Press OK to call up infobar.

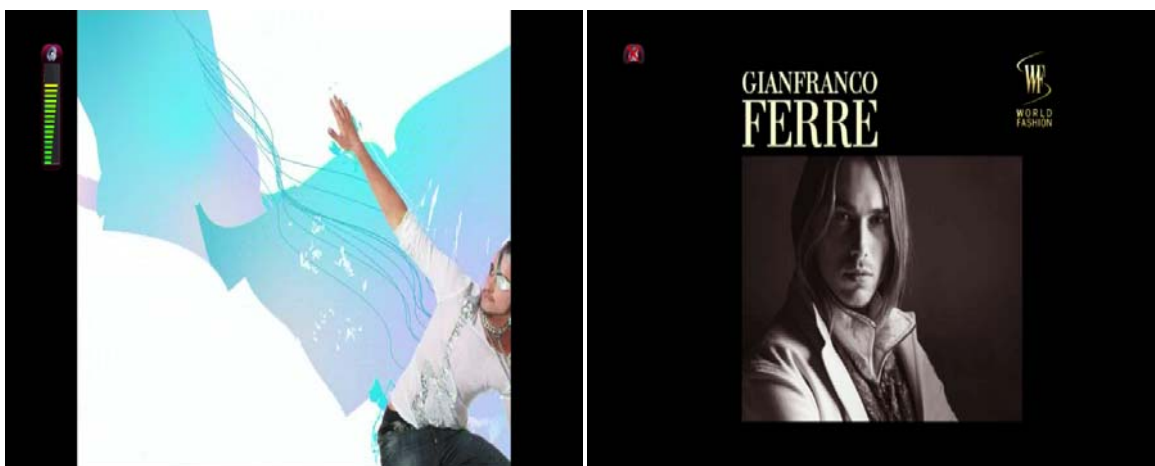


- ① **A** : The tuner being used for the current channel
- ② **SNR (Signal to Noise Ratio)** : Signal Level
- ③ **AGC (Automatic Gain Control)** : Signal Strength
- ④ The name of the current channel
- ⑤ Remaining time of the current program
- ⑥ The current program
- ⑦ The next program
- ⑧ **REC** : Highlighted in red when recording is in progress.
- ⑨ **CAS** : Encrypted program
- ⑩ **Text** : Highlighted when the program provides Teletext.
- ⑪ **16:9** : Screen ratio
- ⑫ **RED** : to activate recording
- ⑬ **GREEN** : to call up Subservices, if available
- ⑭ **YELLOW** : to activate Timeshift
- ⑮ **Extensions** : to call up a menu for Sleep Timer and Graphical Multi EPG


4.4 Volume Control

How to use > Press VOLUME  /  or press 

You can adjust the audio volume by pressing **VOLUME +/-** key. You can also mute or unmute the audio temporarily by pressing **MUTE** key

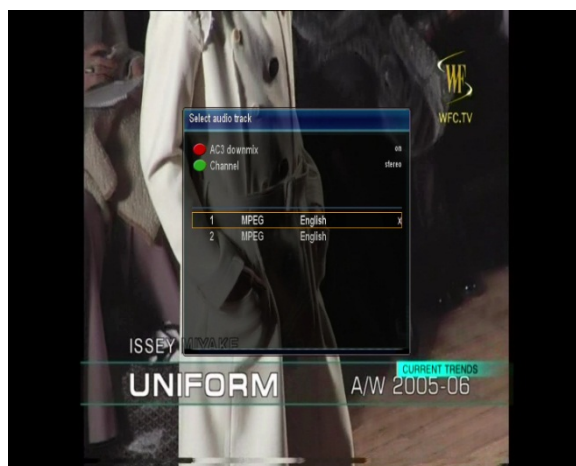


4.5 Selecting Audio Track

How to use > Press 

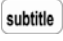
You can check what audio tracks are available to choose by pressing **AUDIO** key.

By using **UP/DOWN** key and **Color** key, you can select a different audio language or Stereo sound.



NOTE: Available options on this menu will differ depending on the service.

4.6 Subtitle

How to use > Press 

You can view the subtitle of the current program if the program provides the subtitle. Press **SUBTITLE** key and **Subtitle selection** menu appears as below.

Available subtitles, if any, will display. By using **UP/DOWN** navigate the list to select a subtitle that you want to play and press **OK** to activate it.

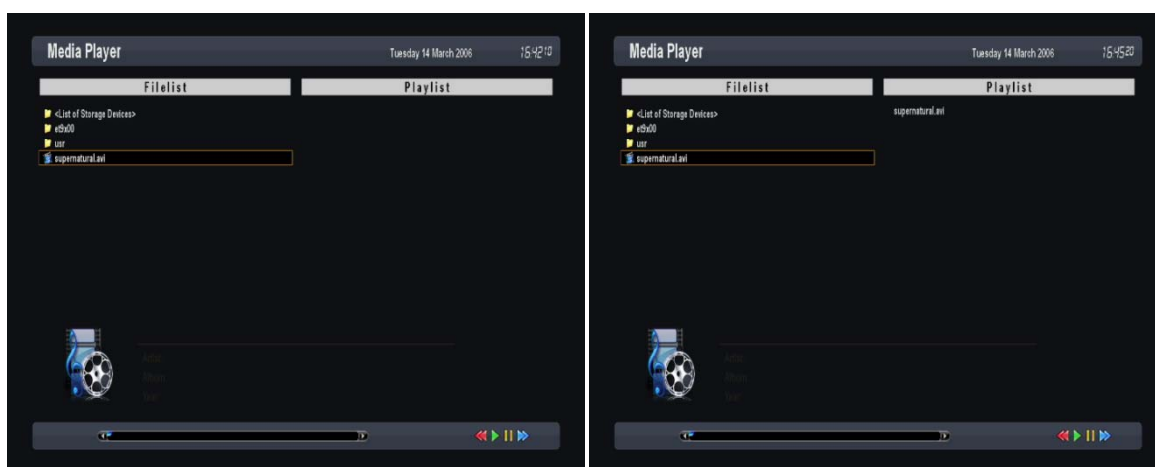


4.7 Media Player

How to use > Press  → 'Media Player'

UNIBOX HD3 is truly a multimedia receiver capable of playing media contents. Using Media Player, you can enjoy Music, Photo and Video contents stored on the internal HDD and/or a USB memory stick plugged into UNIBOX HD3.

If you play **Media Player**, the following player will appear.



- ① Go into any directory of the HDD or plugged USB.
- ② Select a file to play and press **OK**.
- ③ Supported formats are mainly JPG, MP3, AVI, etc.
- ④ In the same way, you can play the recording files stored on the HDD.

4.8 Sleep Timer

How to use > Press  → 'Standby/Restart' → 'Sleep Timer'

You can set a specific time when your UNIBOX HD3 goes into Standby mode or Deep Standby mode, using this menu. Three color keys are used to setup this sleep timer.

- ① **RED:** This option is used to enable or disable *Sleep Timer*.
- ② **GREEN:** This option is used to choose between *Standby mode* and *Deep Standby mode*.
- ③ **YELLOW:** This option is used to choose whether to be asked of confirmation before system shutdown.
- ④ **BLUE:** This option is used to use time of currently running service.



4.9 Teletext

How to use > Press TEXT

You can call up Teletext information by pressing **TEXT** key. It will take some time to load all the information.



You can navigate through the Teletext page by using **UP/DOWN** key to select a text page. Also, just simply enter the page number that you want to read.

MUTE key

Once you activated Teletext, you can toggle between the live mode and the Teletext page by pressing

MUTE key instantly. In this case, loading of the Teletext page takes place instantly.

VOLUME + key

If you want to enlarge the page, press **VOLUME + key**.

102/01 RTPtexto 102 QUI 10FEV 02:41:32	
índice AaZ RTP	
TEXTO 1/8	
A	
Ações Bolsa...	241
Acessibilidades	190
Açores-Tempo...	580
Ajude a Ajudar	165
Andebol Elite...	469
Andebol Liga...	468
Anedotas...	517
Astrologia...	519
Audiodescrição	192
B	
Basquetebol...	471
B. Astronómico	574
C	
B.Hidrográfico	570
Bolsa-Índices...	240
Bolsa-Ações...	241
Bolsa-Variáveis	242
Bolsa-Mundial...	239
Calendário...	598
Câmbios...	244
Chequehotel-Pub	540
Código Estrada...	125
Concursos RTP...	140
Contactos...	104
Continent-tempo	576
GANHE PREMÍOS TODOS OS DIAS! 130	
Participe nos passatempos da RTP!	
Entrada	PSP Farmácias

102/03 RTPtexto 102 QUI 10FEV 02 42:33	
índice AaZ RTP	
TEXTO 3/8	
Futebol:	
Liga Honra...	409
II Divisão A...	416
II Divisão B...	419
II Divisão C...	422
II Divisão D...	425
III Divisão A...	428
Liga Alema...	452
Liga Campeões...	457
Liga Espanhola...	453
Liga Europeia...	457
Liga Francesa...	454
Liga Inglesa...	455
Liga Italiana...	456
Entrada	PSP Farmácias

VOLUME - Key

If you want to reduce the page size, press **VOLUME - key**.

102/01 RTPtexto 102 QUI 10FEV 02:41:32	
índice AaZ RTP	
TEXTO 1/8	
A	
Ações Bolsa...	241
Acessibilidades	190
Açores-Tempo...	580
Ajude a Ajudar	165
Andebol Elite...	469
Andebol Liga...	468
Anedotas...	517
Astrologia...	519
Audiodescrição	192
B	
Basquetebol...	471
B. Astronómico	574
C	
B.Hidrográfico	570
Bolsa-Índices...	240
Bolsa-Ações...	241
Bolsa-Variáveis	242
Bolsa-Mundial...	239
Calendário...	598
Câmbios...	244
Chequehotel-Pub	540
Código Estrada...	125
Concursos RTP...	140
Contactos...	104
Continent-tempo	576
GANHE PREMÍOS TODOS OS DIAS! 130	
Participe nos passatempos da RTP!	
Entrada	PSP Farmácias

102/05 RTPtexto 102 QUI 10FEV 02:43:36	
índice AaZ RTP	
TEXTO 5/8	
M	N
Mares...	570
Mares Cascais...	572
Mares Faro...	571
Mares Leixões...	573
Meteorologia:	
Índice...	575
Açores...	580
Continente...	576
Europa...	582
Madeira...	578
Mira Técnica...	105
Modalidades...	466
Motociclismo...	486
Notícias:	
Índice...	120
Cultura...	275
Desporto...	245
Economia...	230
Internacional...	215
Nacional...	200
Novo C.Estrada...	125
Passatempos...	130
Programação TV	300
Entrada	PSP Farmácias

4.10 Electronic Program Guide

How to use > Press "INFO" key

The Electronic Program Guide (EPG) displays the program information of each channel, if provided, in time and date order. You can view the detailed program information by pressing **INFO** key and the menu, **Eventview** appears.

Detailed information of the current channel will be displayed on EPG. On this menu, three options are provided.

RED (Similar)

This option helps you find similar programs. If there are one or more programs that are similar to the current program, **EPG Selection** window displays them.

GREEN (Add Timer)

If you press GREEN key, Timer entry menu appears. This option is used to setup a new timer for recording or zapping.

- **Name:** Displays the name of the selected program.
- **Description:** Displays a short description of the selected program.
- **Timer Type**
 - Select **Zap** for channel tuning reservation.
 - Select **Record** for recording reservation.
- **Repeat Type**
 - Select **Once** for one time of zapping or recording reservation.
 - Select **Repeated** for repeated zapping or recording reservation.
 - Repeats - This option is given only when you selected '**Repeated**' in the Repeat Type.
You can reserve zapping or recording per Daily/Weekly/Mon-Fri/User-defined.
- **Date:** Displays the current date. This entry is on when you selected **Once**, in the Repeat Type.
- **Start Time:** You can set the time to begin recording or zapping.
- **End Time:** You can set the time to end recording or zapping.
- **Channel:** This entry allows you to change the channel. Press **LEFT/RIGHT** key to call up

Channel Selection menu. You can select a different channel from this list using this option.

To return to **Timer entry** menu, press **EXIT**.

YELLOW (Single EPG)

Press YELLOW while Eventview menu is on, to call up the program event schedules of the selected channel.

In this state, you can sort the list according to A-Z order or Time by pressing **YELLOW**.

NOTE: To add a timer for recording or zapping, press GREEN.

BLUE (Multi EPG)

Press **BLUE** to activate **EPG Selection Multi EPG** window.

- You can move the previous or next program within the same channel by using **YELLOW** (Previous)/**BLUE** (Next).

NOTE: Not all channels provide EPG information and thus in case of no EPG data, nothing will be displayed except for the channel name.

- You can switch to another channel by using UP/DOWN key.
- RED key is used to instantly tune into the selected channel.
- GREEN key is used to reserve recording or zapping of the selected program.

4.11 Timeshift

How to use > Press PLAY/PAUSE ►||

For your information, Timeshift is an instant recording of the current program that you are watching. Press **PLAY/PAUSE** key, it will instantly pause the audio and video of the program, and a small window displaying elapsing time information will appear on the left upper side of the screen.



In this state, Timeshifted recording is running until you press either **PLAY** or **PAUSE** again. You can restart viewing of the program.

If you want to stop Timeshifted recording and to return to the live mode, press **STOP** key.



You will be asked of Yes or No to stop Timeshift.

NOTE: What is different from normal recording is that Timeshifted recording is not meant to be stored on HDD. If you stop Timeshift, you cannot replay the Timeshifted recording

4.12 Recording

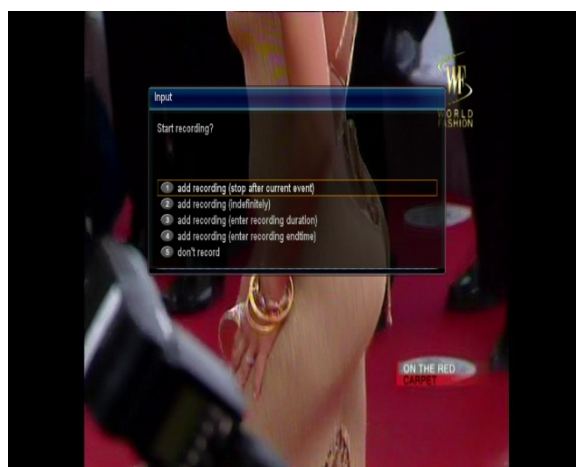
UNIBOX HD3 is a Personal Video Recorder with an integrated DVB-S2 tuner. You can record multiple programs at the same time. There are two ways to operate and manage recording.

⑤ Instant Recording

How to use > Press long RED  or



Press long **RED** or **REC** key to start the recording of the current program.



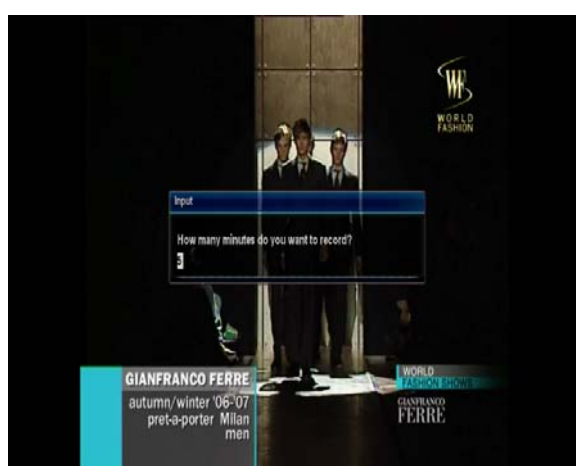
Five recording options are given.

Add recording (stop after current event)

This option is used when you want to end recording when the current program ends.

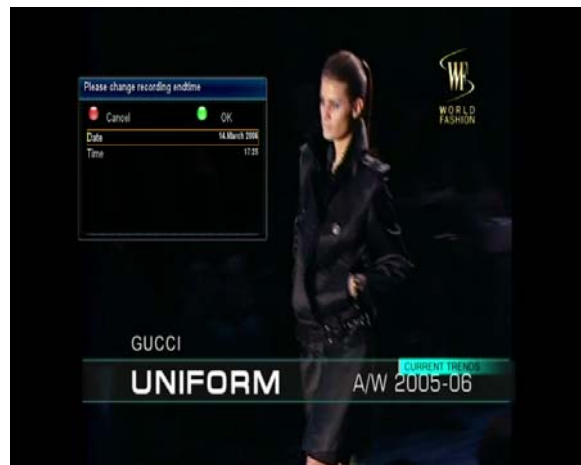
Add recording (enter recording duration)

This option is used when you want to manually set the length of recording by entering a certain number as below :



Add recording (enter recording end time)

This option is used when you want to define a certain date and time when the recording is to stop.



Add recording (indefinitely)

This option is used when you want to keep recording running without a specific end time. Recording will continue unless you stop it.

Don't record

This option is used to exit from this menu without recording.

⑥ Recording by Timer

How to use > Press **MENU** → 'Timer'

You can manage recording process using Timer List menu. Press **MENU** and select **Timer** on the menu.



In this menu, color keys are assigned for each different function.

RED (Delete)

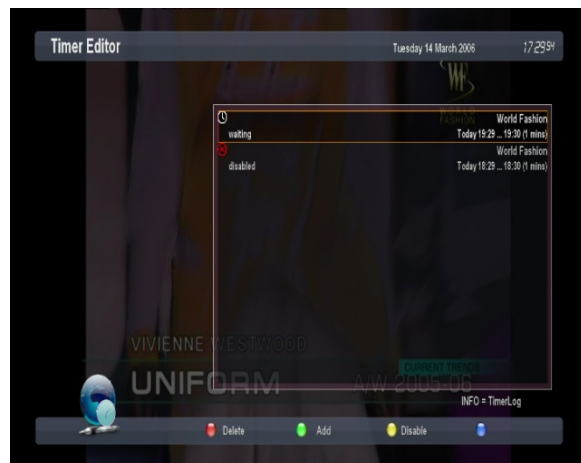
This option is used to delete a timer.

GREEN (Add)

This option is used to add a timer.

**YELLOW (Disable)**

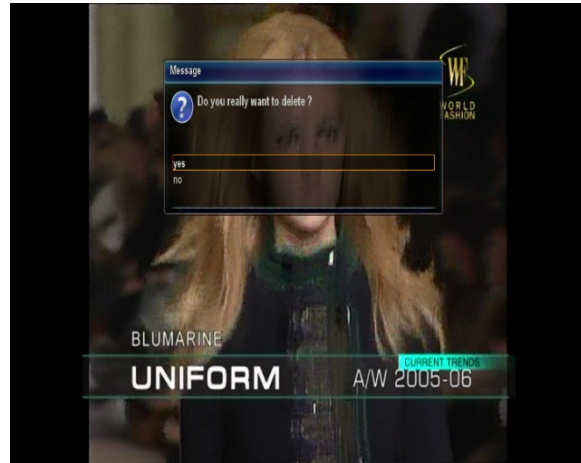
This option is used to disable the timer and X mark will appear.



NOTE: if you want to enable the disabled timer, press YELLOW again.

BLUE (Cleanup)

This option is used to remove those finished timers from the Timer list.

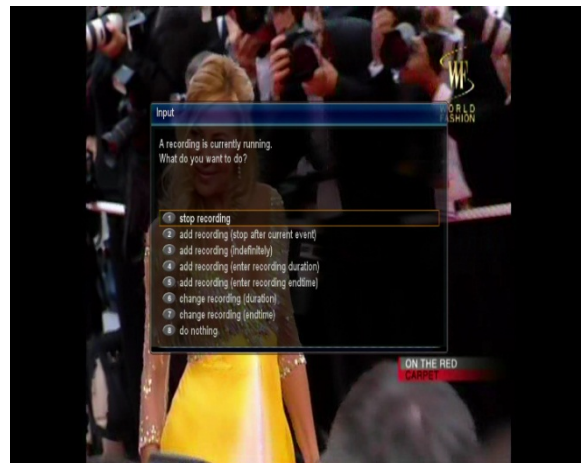


NOTE: Make sure that the HDD on your UNIBOX HD3 has enough free space available for recording. If the free space on the HDD is not sufficient, recording might stop before the defined end time.

Stop Recording

How to use > Press RED  or  → 'Stop Recording'

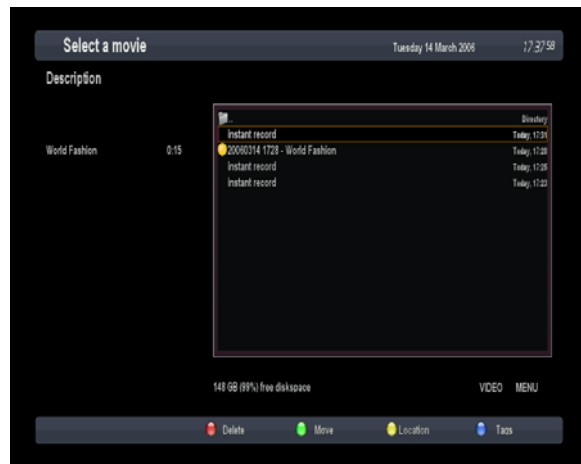
If you want to stop recording, press **RED** again while recording is running. Select Stop Recording.



4.13 Recording Play

How to use > Press **Filelist**

You can view recorded files on the **Recorded files** menu. Press **Filelist** to activate this menu.



Select the file that you want to play. It will instantly replay the file and display the recording infobar.



This infobar gives you the following information of the recording.

- ① Title of the recording
- ② Total duration of recording
- ③ Remaining time
- ④ Progressive bar
- ⑤ Elapsed time

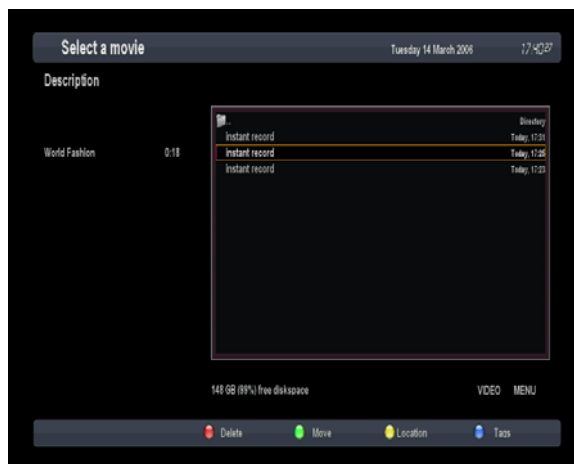
4.14 Managing Recording Files

How to use > Press **Filelist** and **MENU**

If you want to delete a recording file, press **MENU** key while **Recorded files** menu is on.



Select '**Delete**' to delete.



Other than 'delete', in this menu, you have options in sorting and listing of the recording files.

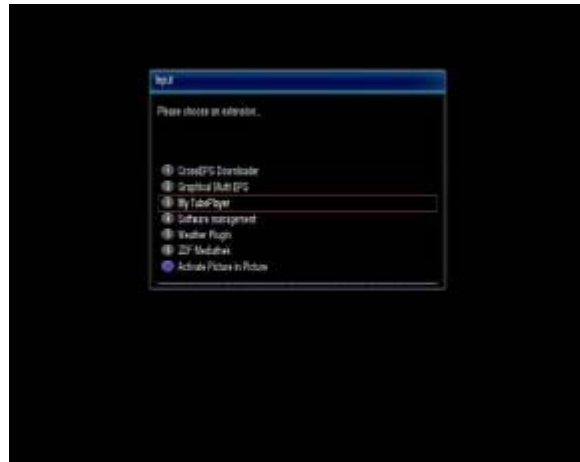
- Sort by date
- List style compact
- List style default
- List style single line
- List style compact with description
- Hide extended description.

4.15 Interactive Media

How to use > Press 

If you want to play interactive media in Internet, press **BLUE** key.

It shows a popup menu. Select '**MyTube Player**'.



It will connect the Media site. Wait a few seconds.



It displays the search menu. You can input text on the search bar by the remote controller.



Use Numeric keys to input text. Or press **BLUE** key. It shows a virtual keyboard.



This is a virtual keyboard.



Please wait a few seconds while searching media.



It displays a searched list. Select a media from the list.

Use Navigation keys and OK key.



It plays the media. You can control the player with **PLAY, PAUSE, STOP** keys



If you want to stop the media, press **STOP** key. It shows a popup menu. And select 'Yes'. It will stop the player.



It returns the previous page after stopping the player.




If you want to exit the MyTube Player, press **EXIT** key. It shows a popup menu. And select 'Yes'.

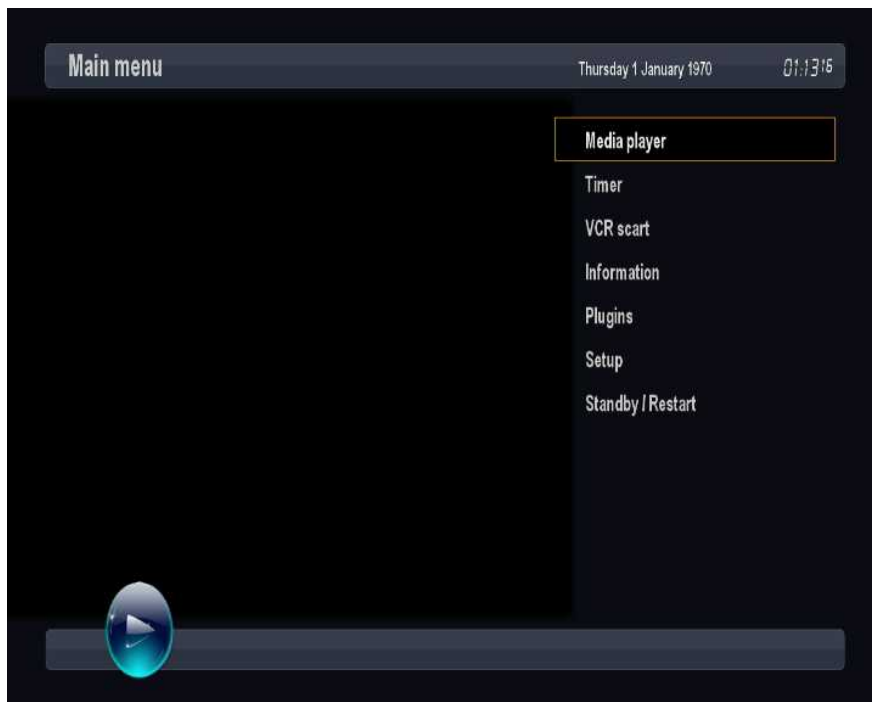


Chapter5. System Configuration

UNIBOX HD3 is a very sophisticated device designed to allow users a variety of system setting options as detailed as possible. You can fine-tune your UNIBOX HD3 to be your OWN system to fit your taste. This chapter will guide you through the entire menu of system configuration. Prior to System Configuration, please take a notice on the menu structure of UNIBOX HD3 first.

5.1 Main Menu

How to use > Press 



The main menu of UNIBOX HD3 consists of the following sub menus.

- ① **Media player:** Activate Media player of UNIBOX HD3. For more information, please refer to the “4.7 Media Player”.
- ② **VCR Scart:** Connect VCR using a SCART cable.
- ③ **Timer:** Set a timer to record a program. For more information, please refer to the “4.12 Recording”.
- ④ **Information:** Have two sub menus for *Service/About*. *Service* menu provides the detailed information of the current Channel. *About* menu provides the detailed information of the H/W and S/W system of your UNIBOX HD3. For more information, please refer to the “5.2.8 Checking H/W & S/W Information”.
- ⑤ **Plug-ins:** Activates Plug-in browser of UNIBOX HD3 .Using this browser, you can log onto the designated website and you can download a variety of new plug-ins.
- ⑥ **Setup:** Provide all of the system settings. For more information, please refer to the “5.2 System Setup”.
- ⑦ **Standby/Restart:** Provide options for power On/Off and sleep timer. For more information, please refer to the “2.4 Power On/Off”.

5.2 System Setup

How to use > Press  → 'Setup'

The Setup menu consists of the following sub-menus.

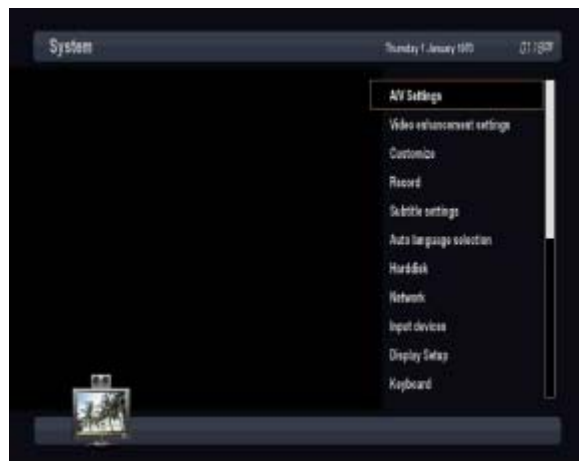
- ① System
- ② Service Searching
- ③ Common Interface
- ④ Parental Control
- ⑤ Factory reset
- ⑥ Cross EPG
- ⑦ FAN Setup
- ⑧ OSD 3D Setup
- ⑨ Software management



5.2-1. System Configuration

How to use > Press  → 'Setup' → 'System'

Here you can find most of the necessary settings that you might need to optimize your UNIBOX HD3 in the way you like it. Please read the followings carefully.



A/V Settings

How to use > Press  → 'Setup' → 'System' → 'A/V Settings'

Here you will find options necessary to setup the audio and video configuration of your UNIBOX HD3.



NOTE: RED is for cancel and GREEN is OK. OK key of RCU is not working in this mode.


Amongst the parameters given in this menu, the following ones are generally what you need to decide for the audio and video.

- ① **Video output:** Here you need to decide which video output you want to use between your TV and UNIBOX HD3. The available options are as below.
 - HDMI
 - SCART
- ② **Mode:** You need to decide which resolution to use according to the video output above and your TV amongst the following options.

Resolution	480i
	576i
	480p
	576p
	720p
	1080i

- ③ **AC3 Default:** *YES* is used when you want to set Dolby Digital audio as the default audio. If the program you are watching has AC3 and Stereo, AC3 is used. On the other hand, *NO* is used when you do not want to set Dolby Digital audio as the default audio. If the program you are watching has AC3 and Stereo audio, Stereo audio is used.
- ④ **AC3 Downmix:** *YES* is used when you want to set the audio output to be down-mixed from AC3 to Stereo. *NO* is used when you do not want to set the audio output to be down-mixed from AC3 to Stereo. If *NO* is on and you are using only HDMI connection, there can be no audio sometimes, if the program that you are watching provides AC3 only. This option is recommended when you are using S/PDIF connection.

Video Enhancement Settings

How to use > Press  → 'Setup' → 'System' → 'Video enhancement settings'

UNIBOX HD3 provides a variety of Video enhancement settings.

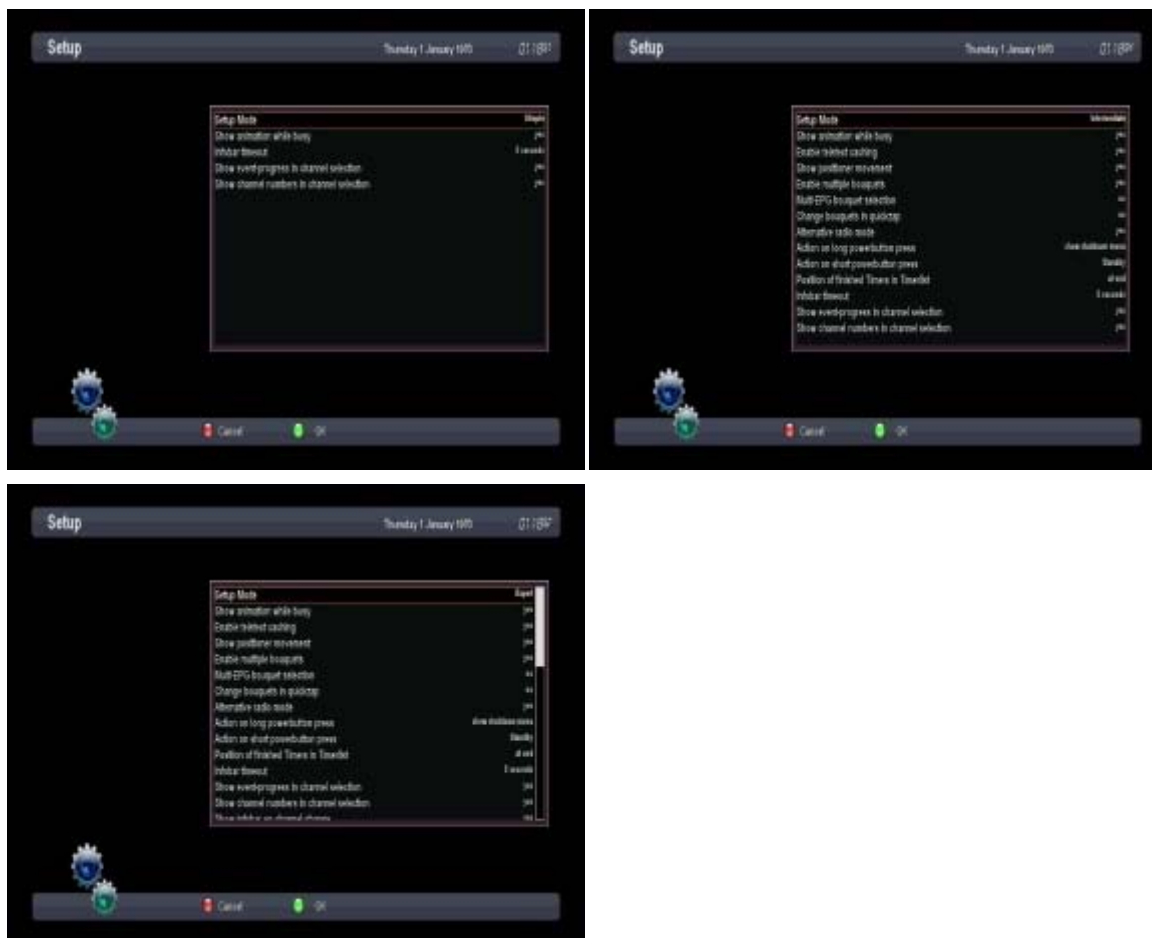
Using **LEFT/RIGHT** key, you can control a value that you want to use for your UNIBOX HD3. After setting, press **GREEN** to confirm and save the changed setting.



Customization

How to use > Press  → 'Setup' → 'System' → 'Customize'

In this menu you will find various customization options and this menu can be displayed in three different formats: **Simple**, **Intermediate**, and **Expert**.




NOTE: RED is for cancel and GREEN is OK. OK key of RCU is not working in this mode.

Amongst the options given in this menu, the following ones are generally what you may need to know.

- ① **Enable multiple bouquets:** If you set this option at YES, it will enable multiple bouquets.

Record

How to use > Press  → 'Setup' → 'System' → 'Record'

UNIBOX HD3 provides options for Recording function.



- ① **Recording always has priority:** YES option is used to set the recording to have a priority over any existing timer. If there occurs a conflict between a timer and a recording in progress, the recording has a priority over the timer. If you set this option at NO, you will be asked whether to switch to the service to record or not.
- ② **Margin before record (minutes):** If you enter a number here, for example, 5, the recording will begin 5 minutes before the defined time. If it is '0', it means that the recording starts exactly at the defined time. This option comes in handy, just in case that a program starts earlier than the original schedule.
- ③ **Margin after record:** If you enter a number here, for example, 5, the recording will stop 5 minutes after the defined time. If it is '0', it means that the recording stops exactly at the defined time. This option comes in handy, just in case that a program ends later than the original schedule.

Subtitle Settings

How to use > Press  → 'Setup' → 'System' → 'Subtitle Settings'

You can set subtitle in this menu.

Using **LEFT/RIGHT** key, you can set a color, position, etc. After setting, press **GREEN** to confirm and save the changed setting.



Language Selection

How to use > Press  → 'Setup' → 'System' → 'Language'

A variety of languages are available for the OSD of UNIBOX HD3.

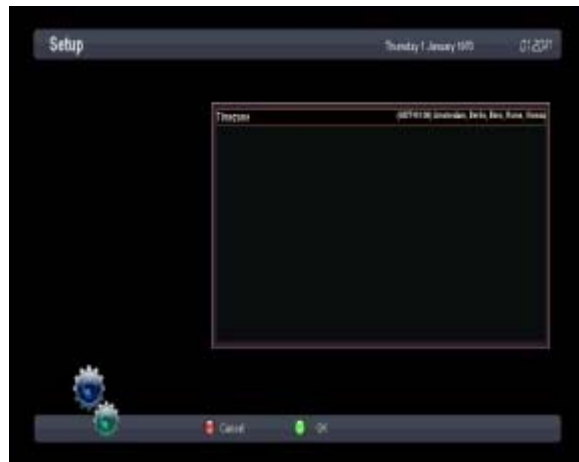


Selecting Time Zone


How to use > Press  → 'Setup' → 'System' → 'Timezone'

You can set your time zone in this menu.

Using **LEFT/RIGHT** key, you can find a time zone that you want to use for your UNIBOX HD3 .After selecting a time zone, press **GREEN** to confirm and save the changed setting.



Hard Disk Setup

How to use > Press  → 'Setup' → 'System' → 'Harddisk' → 'Harddisk setup'

You can set the duration of time after which HDD is to be put into standby mode.


Here, you can choose from

- No standby
- 10 or 30 seconds
- 1, 2, 5,10, 20, 30 minutes
- 1, 2, 4 hours.

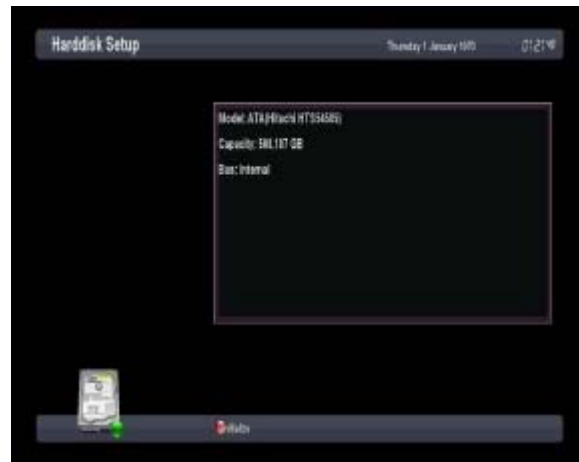
Once you set this option, press **GREEN** key to confirm the change.




Initialize Hard Disk

How to use > Press  → 'Setup' → 'System' → 'Harddisk' → 'Initialization'

You can initialize a Hard Disk. Press **RED** key to initialize the harddisk.



Network Setup

How to use > Press  → 'Setup' → 'System' → 'Network'

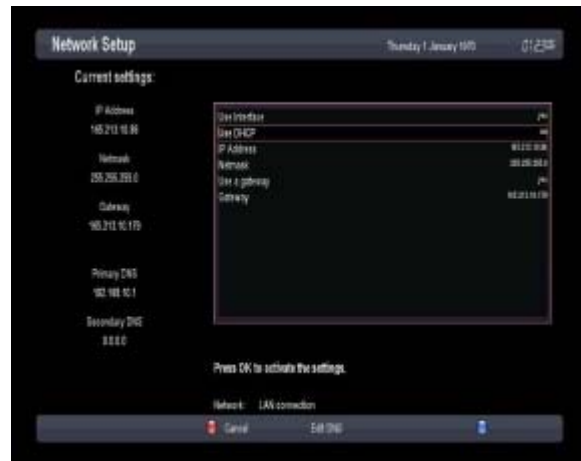
UNIBOX HD3 is integrated with standard 10/100Mbps Ethernet with RJ 45 connector standard. You are recommended to use this network capability of UNIBOX HD3 to fully enjoy the system. You can setup the network settings through this **Network Configuration** menu.



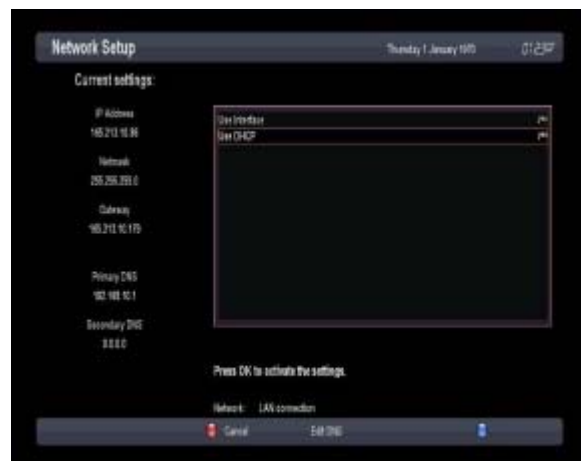
In the **Network Configuration** menu, you will see five sub menus as follows:

① **Adapter settings:** Through this menu, you can set the basic Ethernet configuration.

- **User Interface: YES** is used to activate the Ethernet. If you set this option at **NO**, the Ethernet will not work.



- **Use DHCP: YES** is used to use **DHCP (Dynamic Host Configuration Protocol)**. If you set this option at **YES**, it will automatically detect the correct IP address. **NO** is used when you want to use a certain fixed IP address. In this case, you need to enter correct addresses in each field.

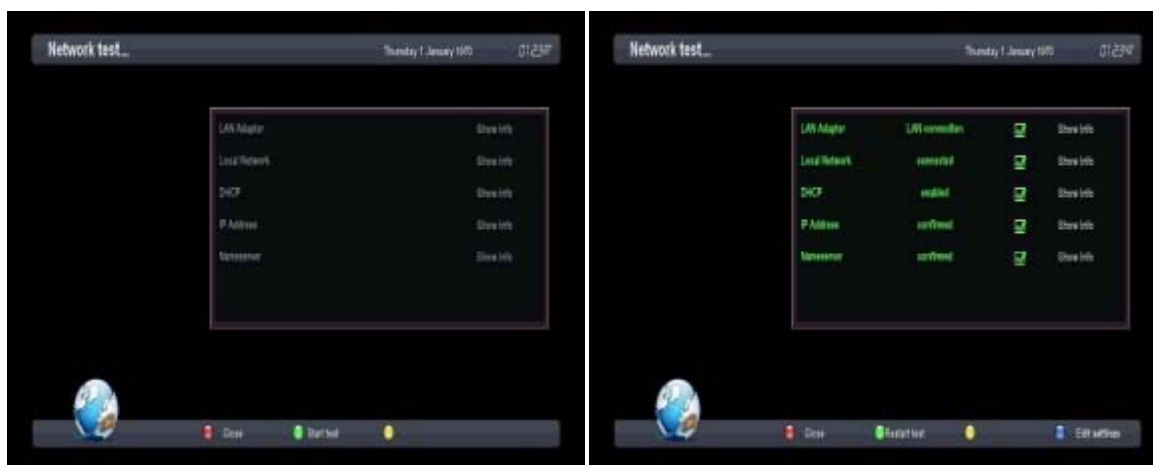


② Nameserver settings

This option is required if you selected not to use **DHCP**. You need to enter the address of the Nameserver.




- ③ **Network test:** When you are not sure whether the network configuration has been done correctly or not, you can run this test.



- ④ **Restart Network:** This option is used when you want to reboot the Ethernet of your UNIBOX HD3.

Skin


How to use > Press  → 'Setup' → 'System' → 'Skin'

UNIBOX HD3 is a Linux based set top box and there are a lot of Skins available for Linux set top box. Using this menu, you can use a different Skin other than the default one.



NOTE: It takes some minutes since the change of Skin requires a complete system shutdown. Please wait patiently until the system reboots with a newly selected Skin.

5.2-2. Service Searching

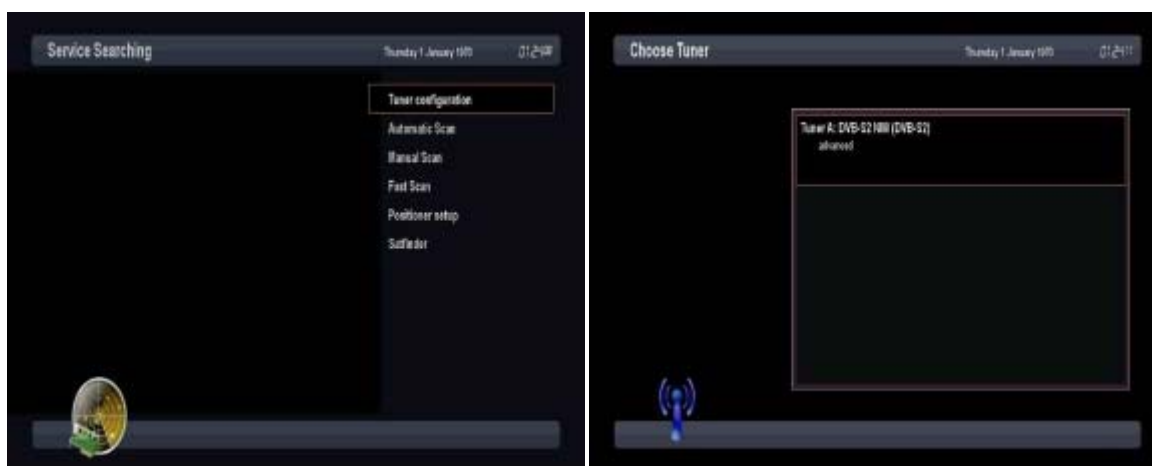
How to use > Press  → 'Setup' → 'Service Searching'

Here you setup the tuners of your UNIBOX HD3 and run channel scanning automatically or manually.

Tuner Configuration: DVB-S2

How to use > Press  → 'Setup' → 'Service Searching' → 'Tuner Configuration'

If you run the First Time Installation process (refer to the “3. First Time Installation”), the Tuner A is already configured. You can check the information of Tuner A and which satellites are scanned by Tuner A as follows.



Tuner Configuration: DVB-C

How to use > Press  → 'Setup' → 'Service Searching' → 'Tuner Configuration'

Use **UP/DOWN** to select DVB-C Tuner and press the OK-Button. The Reception Settings menu will open up.

- **Frequency bands**

This type of searching scans the frequencies used by most cable providers. This setting is the default. Use **LEFT/RIGHT** to set the "Used service scan type" option to "Frequency bands".

Press the **OK** button to save your settings.

You will be taken back to the "Tuner configuration" menu.

- **Frequency steps**

This type of searching scans the set frequencies step by step in a set increment.

Use **LEFT/RIGHT** to set the "Used service scan type" option to "Frequency steps".

Frequency scan step size (KHz): Use the **Numeric keypad** to set the step increment.

Press the **OK** button to save your settings.

You will be taken back to the "Tuner configuration" menu.

Tuner Configuration: DVB-T

How to use > Press  → 'Setup' → 'Service Searching' → 'Tuner Configuration'


Use **UP/DOWN** to select the DVB-T Tuner and press the OK button.

The Reception settings menu will open up.

Choose your region by pressing **LEFT/RIGHT**. If you have connected and active antenna and you want to run the antenna without its original power supply set the "Enable 5V for active antenna" option to "On".

Press the **OK** button to save your settings.

Automatic Scan of Services

How to use > Press  → 'Setup' → 'Service Searching' → 'Automatic Scan'

The easiest way to scan services is to use Automatic Scan. In the Automatic Scan menu, there are two options to choose from as below.




- **Clear Before Scan: YES** is used when you want to delete the existing channel list before you start the automatic scan. If you want to keep the existing list, select **NO**.

Press **OK** to activate the automatic scan. This will take some minutes. As the scan proceeds, you will see the progressive bar and the newly found services underneath.



Manual Scan of Services

How to use > Press  → 'Setup' → 'Service Searching' → 'Manual Scan'

If you know well enough to configure each exact setting required for manual search of services, you can do manual scan as well. There are many parameter values that you need to decide as below.



Amongst other things, the below parameters are what you need to decide prior to performing manual scan.

- ① **Tuner:** You need to decide which tuner you want to use for manual scan.
- ② **System:** Here you have two options between DVB-S (SD) and DVB-S2 (HD).
- ③ **Frequency:** You need to enter the exact frequency of the transponder that you want to scan.
- ④ **Symbol Rate:** You need to enter the exact symbol rate of the transponder that you want to scan.

- ⑤ **Polarity:** Here, you have options for Horizontal, Vertical, Circular Left and Circular Right. You need to know the polarity of the transponder that you want to scan.

- ⑥ **FEC (Forward Error Correction):** You need to enter the exact FEC value of the transponder that you want to scan.

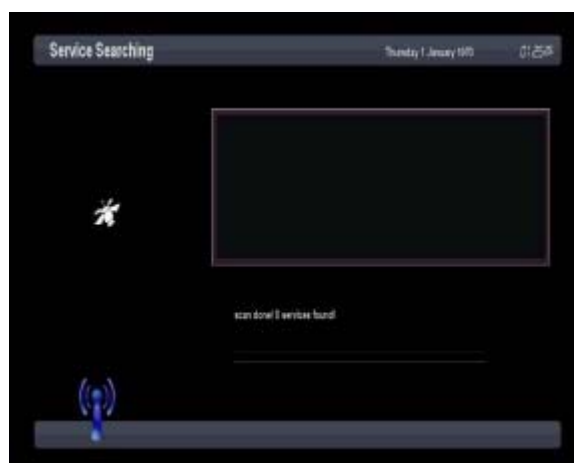
- ⑦ **Modulation:** Here you have two options for QPSK (SD) and 8PSK (HD).

- ⑧ **Network Scan:** Here you have two options for **YES** and **NO**. **NO** is used to scan the transponder (TP) based on the data that your UNIBOX HD3 currently has. **YES** is used to scan the TP not just based on the existing TP data but also using new TP data, if there is TP data newly transported from the TP. Naturally, **YES** option takes longer while it may results in a better scan result.


- ⑨ **Clear Before Scan:** **YES** is used when you want to delete the existing channel list before you start the automatic scan. If you want to keep the existing list, select **NO**.

- ⑩ **Only Free Scan:** Here you have two options for **YES** and **NO**. You want to scan only Free to Air channels without any encryption, select **YES**. Otherwise, select **NO** to scan all FTA and CAS channels.

Press **OK** to activate the manual scan. This will take some minutes. As the scan proceeds, you will see the progressive bar and the newly found services underneath.

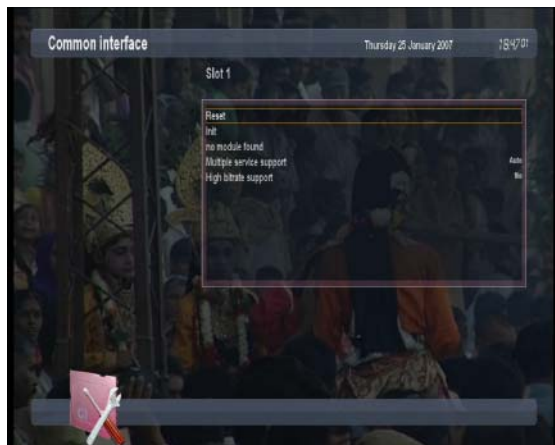


5.2-3. Checking CAM


How to use > Press  → 'Setup' → 'Common Interface'

To be able to watch CAS channels, you need to have a proper CAM and a Smartcard. UNIBOX HD3 is integrated with two Common Interface slots. If you have two CAM modules and keep them inserted in your UNIBOX HD3, it will reduce the trouble of changing CAM.

If you have inserted one or two CAMs, you can check the information of the inserted CAMs, through this menu as below:

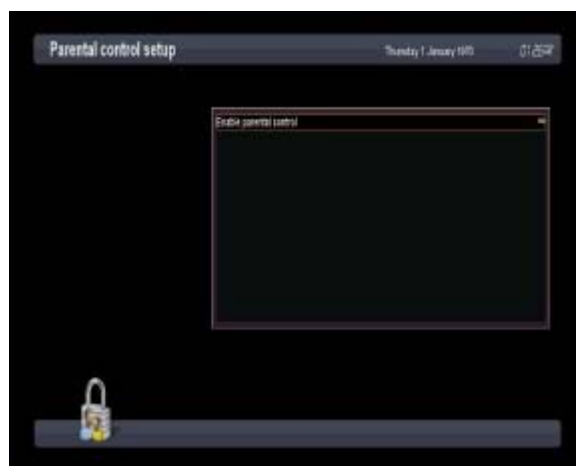


5.2-4. Parental Control

How to use > Press  → 'Setup' → 'Parental Control'

If you want to prevent certain channels from being accessed by others, you can do so using this menu.

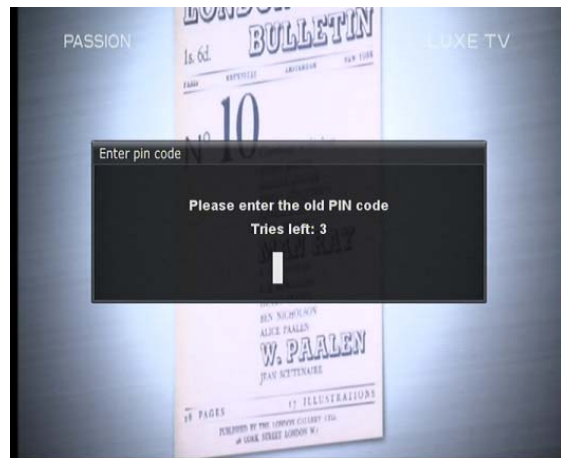
- ① Go to Parental Control menu by pressing **MENU > Setup > Parental Control**.



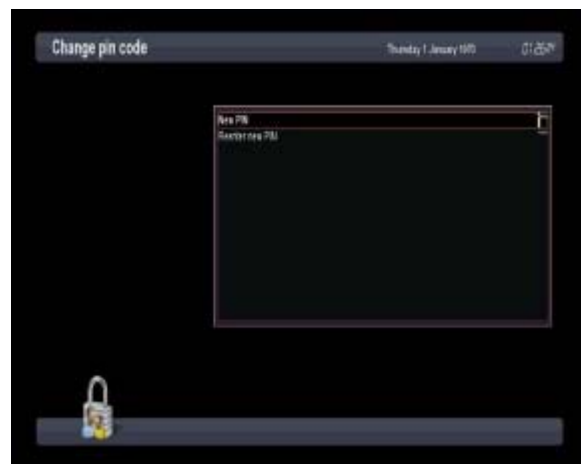
- ② Set the parental control option at **YES** using **LEFT/RIGHT** key. The menu will change as below.



- **Protect setup:** If you set this option at **YES**, you will be asked to enter PIN code when you enter this Parental setup menu.



- **Change setup pin:** If you want to change the existing PIN code for Parental setup, you can do so using this menu.



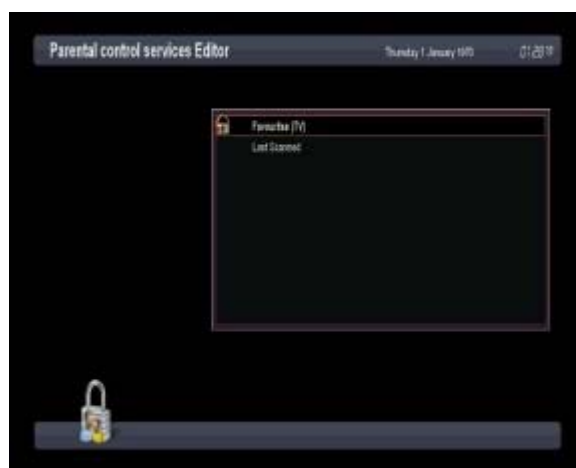
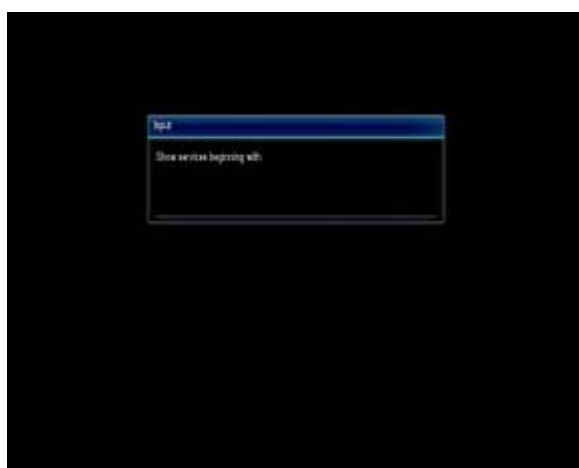
You need to enter a new PIN code twice.

- **Protect services:** You need to set this option at **YES**, if you want to lock certain channels with PIN code.
- **Parental control type:** This option will be activated only if you set Protect services at YES. Here there are two options:
 - White list: This option is used to block all channels except those channels in the parental control list.
 - Black list: This option is used to block only those channels included in the parental control list.

- **Change service pin:** Here you can define a PIN code required to change services to be included in the parental control list.

NOTE: PIN code here is used for Change service and thus you are recommended to use a PIN code different from that used for Protect services.

- **Edit service list:** Here you can add services that you want to lock with PIN code. Services will be arranged in the alphabetical order and you can select an alphabet to enter into the list where you can find the channel that you want to lock.




Once the selected channel is locked, next time when you or anyone else wants to tune into this service, the menu asking for PIN code will appear instantly as below.

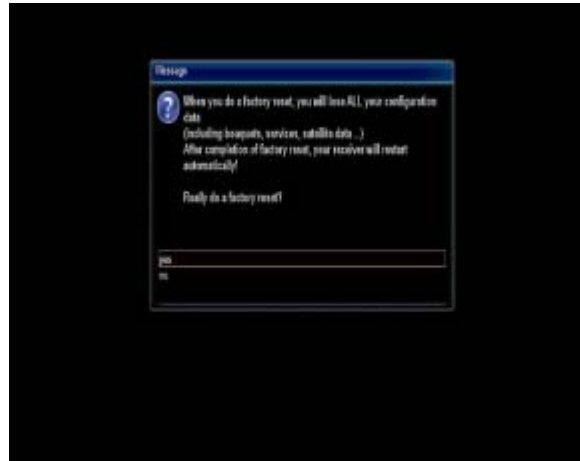


NOTE: It is very important not to lose this PIN code.

5.2-5. Factory Reset

How to use > Press  → 'Setup' → 'Factory Reset'


If you want to erase all installed service list as well as all configurations, run the Factory Reset process. Select YES in the below menu to run the factory reset.



Upon the completion of factory reset process, your UNIBOX HD3 will reboot automatically and start the First Time Installation process.

NOTE: If you do this factory reset, all of your configuration data including bouquets, service lists, satellite parameters, and so on will be erased.


5.2-6. Cross EPG

How to use > Press  → 'Setup' → 'Cross EPG'

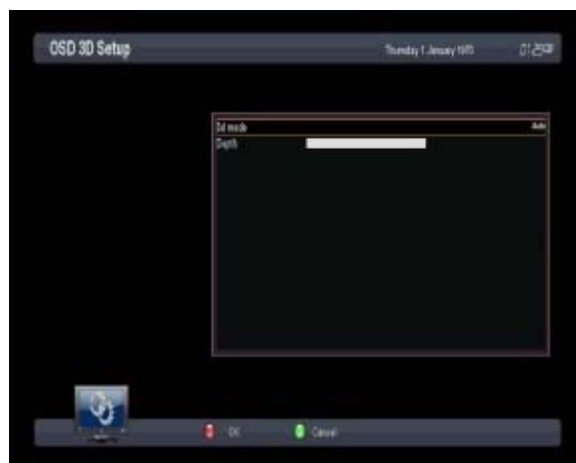
UNIBOX HD3 provides XML TV providers, Open TV providers, XEPGDB providers, Scripts providers, and MHW2 provides. You can set the configuration.



5.2-7. OSD 3D Setup

How to use > Press  → 'Setup' → 'OSD 3D Setup'

UNIBOX HD3 provides OSD 3D modes. Select Auto, Off, Side by Side, or Top and bottom.




5.2-8. Checking H/W & S/W Information

How to use > Press  → 'Information'

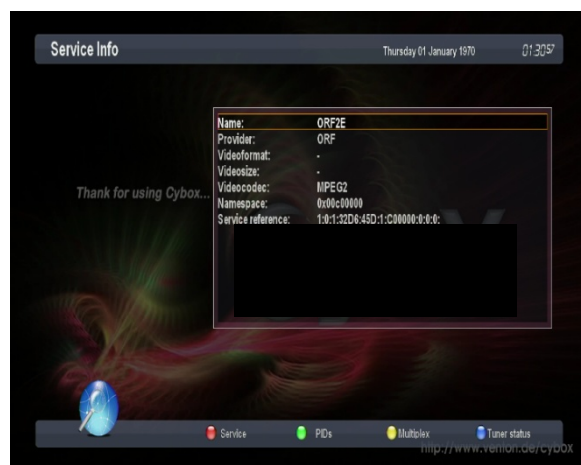
If you want to check the H/W or S/W system of your UNIBOX HD3, this is the menu that you need to use. Also, here you can check very detailed information of a specific service.

Service Information

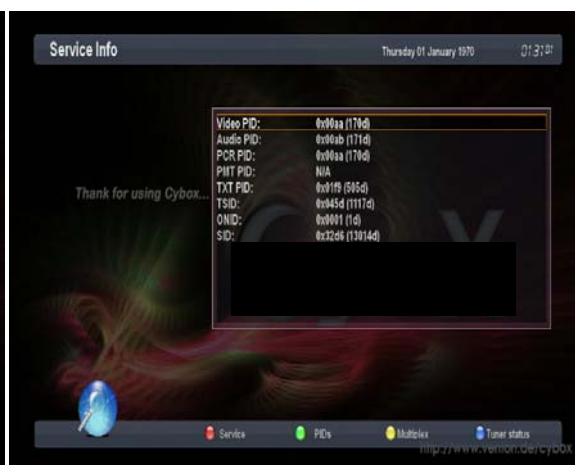
How to use > Press  → 'Information' → 'Service'

In this menu, you can see all the parameter data of the current channel. The service information is well arranged in four sections as below:

① Service info



② PIDs




③ Transponder



④ Tuner Status

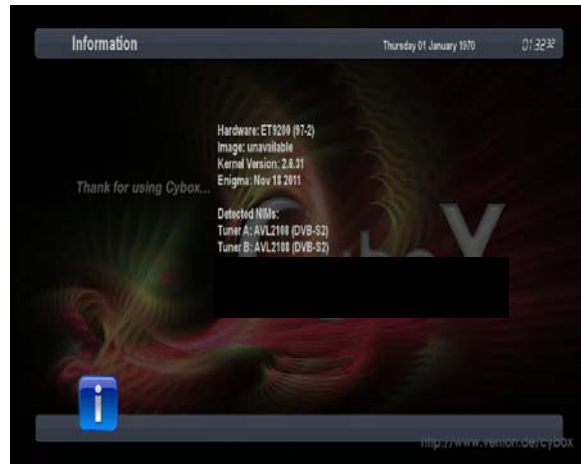


System Information

How to use > Press  → 'Information' → 'About'

This menu is for you to check the current system of your UNIBOX HD3. You can see the following information:

- ① S/W version
- ② Detected NIMs for both Tuner A & B
- ③ Detected HDD



Chapter6.

Menu Structure

Main Menu				
1 st level	2 nd level	3 rd level	4 th level	5 th level
Media Player	File browser	N/A	N/A	N/A
Timer	Timer Editor	N/A	N/A	N/A
VCR Scart	Switch to VCR Scart	N/A	N/A	N/A
Information	Service	Service Informations	N/A	N/A
	About	About	N/A	N/A
Plugins	Plugin browser	N/A	N/A	N/A
Setup	System	A/V Settings	A/V Setup	N/A
		Video enhancement settings	Video Enhancement Setup	N/A
		Customize	Setup	N/A
		Record	Setup	N/A
		Subtitle settings	Setup	N/A
		Display Setup	Setup	N/A
		Auto language selection	Setup	N/A
		Harddisk	Harddisk setup	Setup
			Initialization	Select HDD
			Filesystem Check	Select HDD

			Convert filesystem ext3 to ext4	Select HDD
		Network	Network Configuration	N/A
		Input devices	Select Input Device	Input Devices Setup
		Keyboard	Setup	N/A
		Recording paths	Recording Paths Setup	N/A
		Language	Language Selection	N/A
		Timezone	Setup	N/A
		HDMI-CEC Setup	HDMI-CEC Setup	N/A
		Skin	Choose Your Skin	N/A
		Video Fine-Tuning	Brightness	Contrast
	Service Searching	Tuner configuration	Select Tuner	Tuner Settings
		Automatic Scan	Service Searching	N/A
		Manual Scan	Service Scan	N/A
		Positioner setup	N/A	N/A
		Satfinder	Satfinder	N/A
	Common Interface	Slot1	N/A	N/A
	Parental control	Parental control setup	N/A	N/A
	Factory reset	N/A	N/A	N/A

	Cross EPG	Configure	N/A	N/A
		XMLTV providers	N/A	N/A
		OpenTV providers	N/A	N/A
		XEPGDB providers	N/A	N/A
		Scripts providers	N/A	N/A
		MHW2 providers	N/A	N/A
		Providers start order	N/A	N/A
		Update RYTEC providers	N/A	N/A
		Update XEPGDB providers	N/A	N/A
		Download now	N/A	N/A
		Force CSV import now	N/A	N/A
		Force EPG.DAT conversion now	N/A	N/A
		Force EPG reload	N/A	N/A
		Info about database	N/A	N/A
		About	N/A	N/A
	OSD 3D Setup	3D mode Setup	N/A	N/A
	Software management	Manage extensions	Extensions management	N/A
		Software update	N/A	N/A
		Software update (Offline)	N/A	N/A

		Software restore	Image Wizard	N/A
		Backup system settings	Command Execution	N/A
		Restore system settings	N/A	N/A
		Install local extension	N/A	N/A
		Advanced Options	Advanced restore	Restore
			Choose backup location	N/A
			Choose backup files	Backup
			Packet management	IPKG upgrade
			Choose upgrade source	Select IPKG source
Standby/Restart	Sleep Timer	Set Timer	N/A	N/A
	Standby	N/A	N/A	N/A
	Restart	N/A	N/A	N/A
	Restart GUI	N/A	N/A	N/A
	Deep Standby	N/A	N/A	N/A

Chapter7. Troubleshooting

Before you contact your local service center, please read the following tips carefully.

NOTE: If the antenna is covered with snow or the RF signal is weakened by heavy rain, the quality of audio and video may become temporarily poor. If you experience poor audio and video quality due to bad weather conditions, please check if your satellite antenna is oriented in the original direction. And see if it is covered by snow. Also, check if your LNB is not damaged.

1. No Video on TV

- Check first if the product is powered on and in operation mode.
- Check if the video cable is properly connected between TV and UNIBOX HD3.
- Check if the satellite cable is properly connected to UNIBOX HD3.
- Check if the selected channel is currently on air.
- Check if the selected channel is encrypted and if you have a corresponding access smartcard.

2. Problem with audio quality

- Check if your audio cable is connected correctly.
- Check the volume level of your TV and the product.
- Check if the product or TV is on mute.
- Check the audio option if it is correctly selected for the program that you are currently watching.

3. Remote control problem

- Check if the batteries are correctly mounted.
- If your remote control has been used for long, change the batteries.
- Point the remote control directly toward the product.
- Make sure that nothing blocks the front panel display.

4. Channel search problem

- Make sure if tuner configurations are all correctly made.
- Check if the antenna cable(s) are properly connected.

5. Encrypted channel viewing problem

- Check if you have the appropriate Smartcard and/or CAM.
- Take the Smartcard and CAM out and re-insert them to re-initialize.
- Check if your system correctly detects the smartcard and CAM.

6. Recording problem

- Check if the HDD has a sufficient space for recording.
- Check if there is a conflict between recording timers.

Chapter8.

Copyright - GNU GPL

GNU GENERAL PUBLIC LICENSE

Version 2, June 1991

Copyright (C) 1989, 1991 Free Software Foundation, Inc.

51 Franklin Street, Fifth Floor, Boston, MA 02110-1301, USA

Everyone is permitted to copy and distribute verbatim copies of this license document, but changing it is not allowed.

Preamble

The licenses for most software are designed to take away your freedom to share and change it. By contrast, the GNU General Public License is intended to guarantee your freedom to share and change free software-to make sure the software is free for all its users. This General Public License applies to most of the Free Software Foundation's software and to any other program whose authors commit to using it. (Some other Free Software Foundation software is covered by the GNU Lesser General Public License instead.) You can apply it to your programs, too.

When we speak of free software, we are referring to freedom, not price. Our General Public Licenses are designed to make sure that you have the freedom to distribute copies of free software (and charge for this service if you wish), that you receive source code or can get it if you want it, that you can change the software or use pieces of it in new free programs; and that you know you can do these things.

To protect your rights, we need to make restrictions that forbid anyone to deny you these rights or to ask you to surrender the rights. These restrictions translate to certain responsibilities for you

if you distribute copies of the software, or if you modify it.

For example, if you distribute copies of such a program, whether gratis or for a fee, you must give the recipients all the rights that you have. You must make sure that they, too, receive or can get the source code. And you must show them these terms so they know their rights.

We protect your rights with two steps: (1) copyright the software, and (2) offer you this license which gives you legal permission to copy, distribute and/or modify the software.

Also, for each author's protection and ours, we want to make certain that everyone understands that there is no warranty for this free software. If the software is modified by someone else and passed on, we want its recipients to know that what they have is not the original, so that any problems introduced by others will not reflect on the original authors' reputations.

Finally, any free program is threatened constantly by software patents. We wish to avoid the danger that redistributors of a free program will individually obtain patent licenses, in effect making the program proprietary. To prevent this, we have made it clear that any patent must be licensed for everyone's free use or not licensed at all.

The precise terms and conditions for copying, distribution and modification follow.

TERMS AND CONDITIONS FOR COPYING, DISTRIBUTION AND MODIFICATION

0. This License applies to any program or other work which contains a notice placed by the copyright holder saying it may be distributed under the terms of this General Public License. The 'Program', below, refers to any such program or work, and a 'work based on the Program' means either the Program or any derivative work under copyright law: that is to say, a work containing the Program or a portion of it, either verbatim or with modifications and/or translated into another language. (Hereinafter, translation is included without limitation in the term 'modification'.) Each licensee is addressed as 'you'.

Activities other than copying, distribution and modification are not covered by this License; they are outside its scope. The act of running the Program is not restricted, and the output from the Program is covered only if its contents constitute a work based on the Program (independent of having been made by running the Program). Whether that is true depends on what the Program does.

1. You may copy and distribute verbatim copies of the Program's source code as you receive it, in any medium, provided that you conspicuously and appropriately publish on each copy an appropriate copyright notice and disclaimer of warranty; keep intact all the notices that refer to this License and to the absence of any warranty; and give any other recipients of the Program a copy of this License along with the Program.

You may charge a fee for the physical act of transferring a copy, and you may at your option offer warranty protection in exchange for a fee.

2. You may modify your copy or copies of the Program or any portion of it, thus forming a work based on the Program, and copy and distribute such modifications or work under the terms of Section 1 above, provided that you also meet all of these conditions:

- a) You must cause the modified files to carry prominent notices stating that you changed the files and the date of any change.
- b) You must cause any work that you distribute or publish, that in whole or in part contains or is derived from the Program or any part thereof, to be licensed as a whole at no charge to all third parties under the terms of this License.
- c) If the modified program normally reads commands interactively when run, you must cause it, when started running for such interactive use in the most ordinary way, to print or display an announcement including an appropriate copyright notice and a notice that there is no warranty (or else, saying that you provide a warranty) and that users may redistribute the program under these conditions, and telling the user how to view a copy of this License. (Exception: if the Program itself is interactive but does not normally print such an announcement, your work based on the Program is not required to print an announcement.) These requirements apply to the modified work as a whole. If identifiable sections of that work are not derived from the Program, and can be reasonably considered independent and separate works in themselves, then this License, and its terms, do not apply to those sections when you distribute them as separate works. But when you distribute the same sections as part of a whole which is a work based on the Program, the distribution of the whole must be on the terms of this License, whose permissions for other licensees extend to the entire whole, and thus to each and every part regardless of who wrote it. Thus, it is not the intent of this section to claim rights or contest your rights to work written entirely by

you; rather, the intent is to exercise the right to control the distribution of derivative or collective works based on the Program.

In addition, mere aggregation of another work not based on the Program with the Program (or with a work based on the Program) on a volume of a storage or distribution medium does not bring the other work under the scope of this License.

3. You may copy and distribute the Program (or a work based on it, under Section 2) in object code or executable form under the terms of Sections 1 and 2 above provided that you also do one of the following:

- a) Accompany it with the complete corresponding machine-readable source code, which must be distributed under the terms of Sections 1 and 2 above on a medium customarily used for software interchange; or,
- b) Accompany it with a written offer, valid for at least three years, to give any third party, for a charge no more than your cost of physically performing source distribution, a complete machine-readable copy of the corresponding source code, to be distributed under the terms of Sections 1 and 2 above on a medium customarily used for software interchange; or,
- c) Accompany it with the information you received as to the offer to distribute corresponding source code.

(This alternative is allowed only for noncommercial distribution and only if you received the program in object code or executable form with such an offer, in accord with Subsection b above.)

The source code for a work means the preferred form of the work for making modifications to it. For an executable work, complete source code means all the source code for all modules it contains, plus any associated interface definition files, plus the scripts used to control compilation and installation of the executable. However, as a special exception, the source code distributed need not include anything that is normally distributed (in either source or binary form) with the major components (compiler, kernel, and so on) of the operating system on which the executable runs, unless that component itself accompanies the executable.

If distribution of executable or object code is made by offering access to copy from a designated place, then offering equivalent access to copy the source code from the same

place counts as distribution of the source code, even though third parties are not compelled to copy the source along with the object code.

4. You may not copy, modify, sublicense, or distribute the Program except as expressly provided under this License. Any attempt otherwise to copy, modify, sublicense or distribute the Program is void, and will automatically terminate your rights under this License. However, parties who have received copies, or rights, from you under this License will not have their licenses terminated so long as such parties remain in full compliance.

5. You are not required to accept this License, since you have not signed it. However, nothing else grants you permission to modify or distribute the Program or its derivative works. These actions are prohibited by law if you do not accept this License. Therefore, by modifying or distributing the Program (or any work based on the Program), you indicate your acceptance of this License to do so, and all its terms and conditions for copying, distributing or modifying the Program or works based on it.

6. Each time you redistribute the Program (or any work based on the Program), the recipient automatically receives a license from the original licensor to copy, distribute or modify the Program subject to these terms and conditions. You may not impose any further restrictions on the recipients' exercise of the rights granted herein. You are not responsible for enforcing compliance by third parties to this License.

7. If, as a consequence of a court judgment or allegation of patent infringement or for any other reason (not limited to patent issues), conditions are imposed on you (whether by court order, agreement or otherwise) that contradict the conditions of this License, they do not excuse you from the conditions of this License. If you cannot distribute so as to satisfy simultaneously your obligations under this License and any other pertinent obligations, then as a consequence you may not distribute the Program at all. For example, if a patent license would not permit royalty-free redistribution of the Program by all those who receive copies directly or indirectly through you, then the only way you could satisfy both it and this License would be to refrain entirely from distribution of the Program.

If any portion of this section is held invalid or unenforceable under any particular circumstance,

the balance of the section is intended to apply and the section as a whole is intended to apply in other circumstances. It is not the purpose of this section to induce you to infringe any patents or other property right claims or to contest validity of any such claims; this section has the sole purpose of protecting the integrity of the free software distribution system, which is implemented by public license practices. Many people have made generous contributions to the wide range of software distributed through that system in reliance on consistent application of that system; it is up to the author/donor to decide if he or she is willing to distribute software through any other system and a licensee cannot impose that choice.

This section is intended to make thoroughly clear what is believed to be a consequence of the rest of this License.

8. If the distribution and/or use of the Program is restricted in certain countries either by patents or by copyrighted interfaces, the original copyright holder who places the Program under this License may add an explicit geographical distribution limitation excluding those countries, so that distribution is permitted only in or among countries not thus excluded. In such case, this License incorporates the limitation as if written in the body of this License.

9. The Free Software Foundation may publish revised and/or new versions of the General Public License from time to time. Such new versions will be similar in spirit to the present version, but may differ in detail to address new problems or concerns.

Each version is given a distinguishing version number. If the Program specifies a version number of this License which applies to it and 'any later version', you have the option of following the terms and conditions either of that version or of any later version published by the Free Software Foundation. If the Program does not specify a version number of this License, you may choose any version ever published by the Free Software Foundation.

10. If you wish to incorporate parts of the Program into other free programs whose distribution conditions are different, write to the author to ask for permission. For software which is copyrighted by the Free Software Foundation, write to the Free Software Foundation; we sometimes make exceptions for this. Our decision will be guided by the two goals of preserving the free status of all derivatives of our free software and of promoting the sharing and reuse of software generally.

NO WARRANTY

11. Because the program is licensed free of charge, there is no warranty for the program, to the extent permitted by applicable law. Except when otherwise stated in writing the copyright holders and/or other parties provide the program 'AS IS' without warranty of any kind, either expressed or implied. Including, but not limited to, the implied warranties of merchantability and fitness for a particular purpose. The entire risk as to the quality and performance of the program is with you. Should the program prove defective, you assume the cost of all necessary serving, repair or correction.

12. In no event unless required by applicable law or agreed to in writing will any copyright holder, or any other party who may modify and/or redistribute the program as permitted above, be liable to you for damages, including any general special, incidental or consequential damages arising out of the use or inability to use the program (including but not limited to loss of data or data being rendered inaccurate or losses sustained by you or third parties or a failure of the program to operate with any other programs), even if such holder or other party has been advised of the possibility of such damages.

END OF TERMS AND CONDITIONS